

Legend

- Council Boundaries
- Sites of Special Scientific Interest

Wind Speed @45m

- < 5 m/s
- 5.0 - 6.0 m/s
- 6.1 - 7.0 m/s
- 7.1 - 8.0 m/s
- > 8 m/s

File name 1017 Planning for Climate Change
Version 1.0
Date April 2008

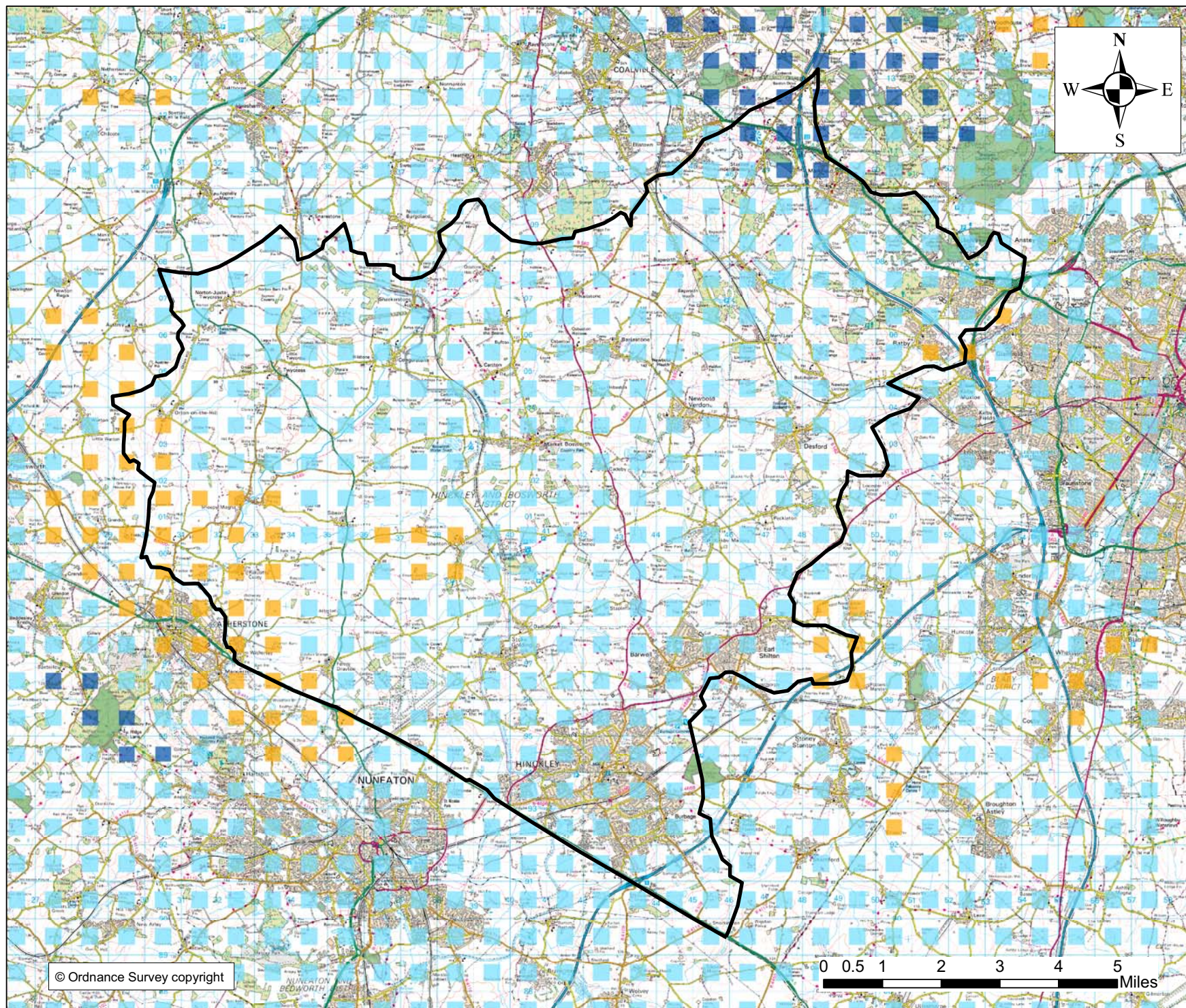
Drawing title:

NOABL database wind speeds for
Blaby District Council
at 45m above ground level





IT Power, Grove House,
Lutyns Close,
Chineham, Hants.
RG24 8AG, UK
itpower@itpower.co.uk
Tel. +44 1256 392700
Fax. +44 1256 392701

© IT Power copyright 2008



© Ordnance Survey copyright

Legend

-  District Boundary
-  Sites of Special Scientific Interest

Windspeed @ 45m

-  < 5 m/s
-  5.0 - 6.0 m/s
-  6.1 - 7.0 m/s
-  7.1 - 8.0 m/s
-  > 8 m/s

File name 1017 Planning for Climate Change
Version 1.0
Date April 2008

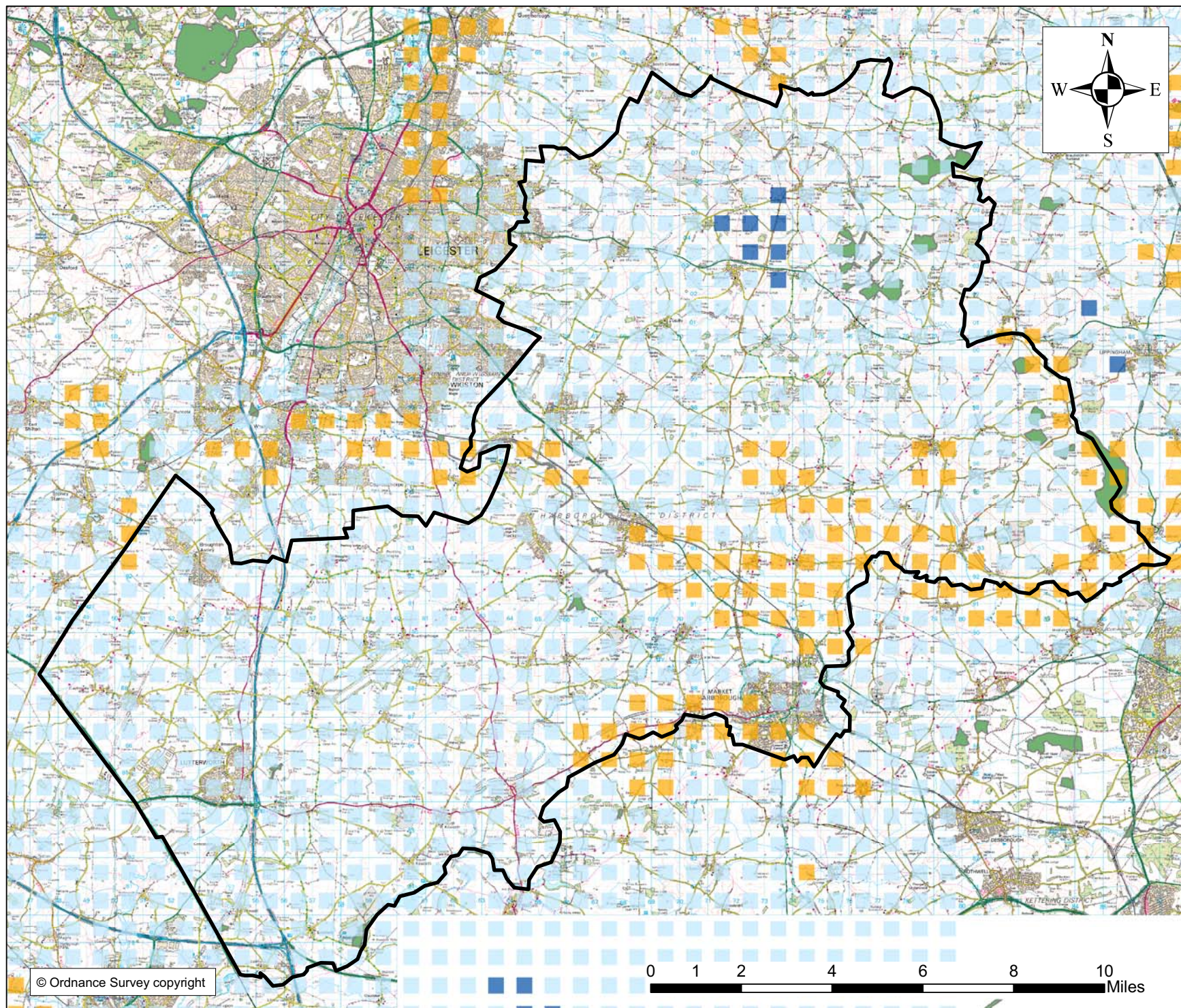
Drawing title:

NOABL database wind speeds for
Hinckley and Bosworth Borough Council
at 45m above ground level



IT Power, Grove House,
Lutyens Close,
Chineham, Hants.
RG24 8AG, UK
itpower@itpower.co.uk
Tel. +44 1256 392700
Fax. +44 1256 392701

© IT Power copyright 2008



Legend

- Council Boundaries
- Sites of Special Scientific Interest

Wind Speed @45m

- < 5 m/s
- 5.0 - 6.0 m/s
- 6.1 - 7.0 m/s
- 7.1 - 8.0 m/s
- > 8 m/s

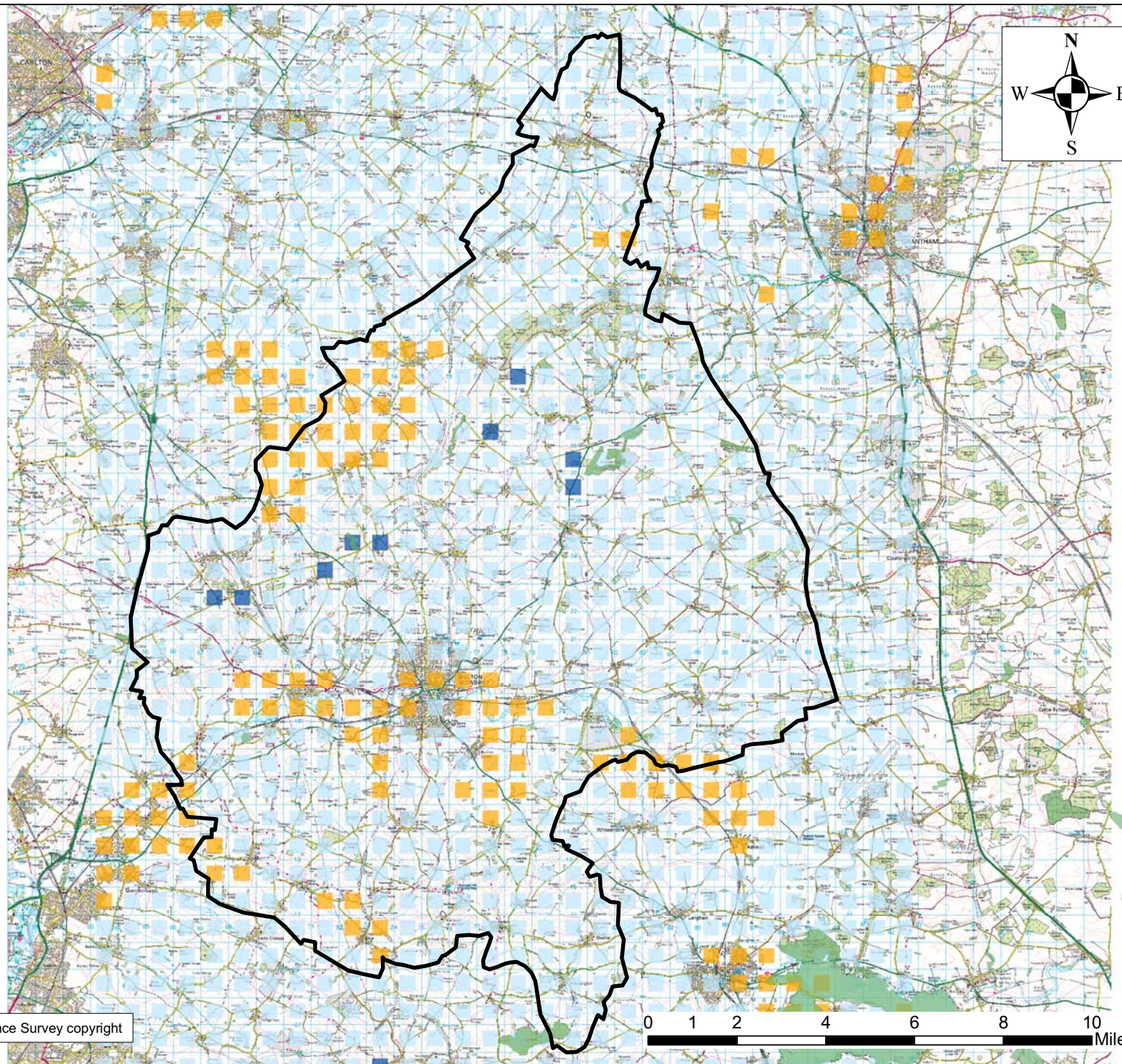
File name 1017 Planning for Climate Change
Version 1.0
Date April 2008

NOABL database wind speeds for
Harborough District Council
at 45m above ground level

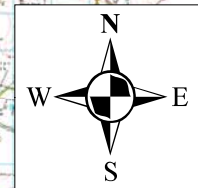


IT Power, Grove House,
Lutyens Close,
Chineham, Hants.
RG24 8AG, UK
itpower@itpower.co.uk
Tel. +44 1256 392700
Fax. +44 1256 392701

© IT Power copyright 2008



© Ordnance Survey copyright



Legend

- Council Boundaries
- Sites of Special Scientific Interest

Windspeed @45m

- < 5 m/s
- 5.0 - 6.0 m/s
- 6.1 - 7.0 m/s
- 7.1 - 8.0 m/s
- > 8 m/s

File name 1017 Planning for Climate Change
Version 1.0
Date April 2008

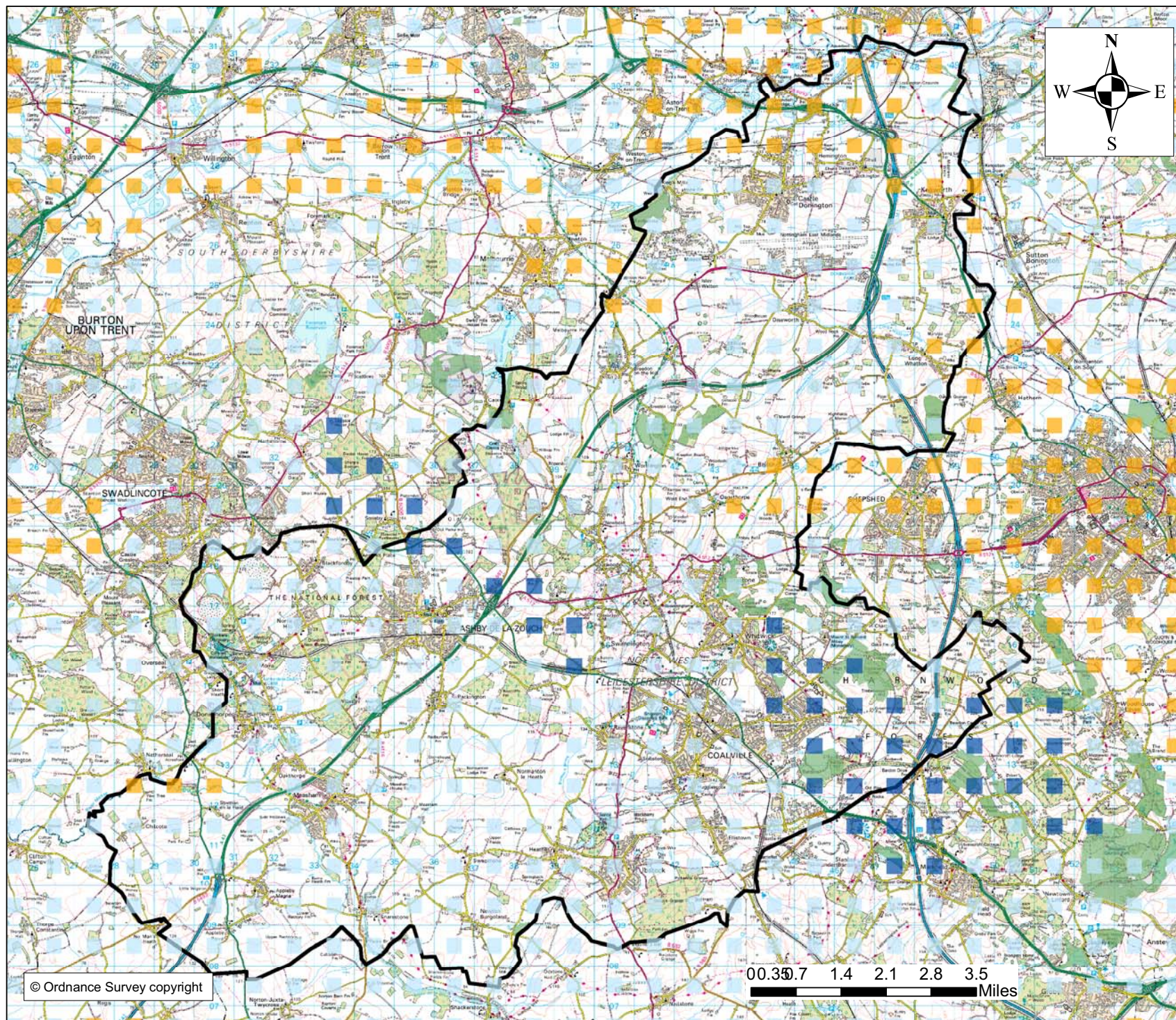
Drawing title:
NOABL database wind speeds for
Melton Borough Council
at 45m above ground level



IT Power, Grove House,
Lutyns Close,
Chineham, Hants.
RG24 8AG, UK
itpower@itpower.co.uk
Tel. +44 1256 392700
Fax. +44 1256 392701

© IT Power copyright 2008

0 1 2 4 6 8 10 Miles



Legend

- Council Boundaries
- Sites of Special Scientific Interest
- Windspeed @45m**
 - < 5 m/s
 - 5.0 - 6.0 m/s
 - 6.1 - 7.0 m/s
 - 7.1 - 8.0 m/s
 - > 8 m/s

File name 1017 Planning for Climate Change
Version 1.0
Date April 2008

Drawing title:

NOABL database wind speeds for
North West Leicestershire District Council
at 45m above ground level

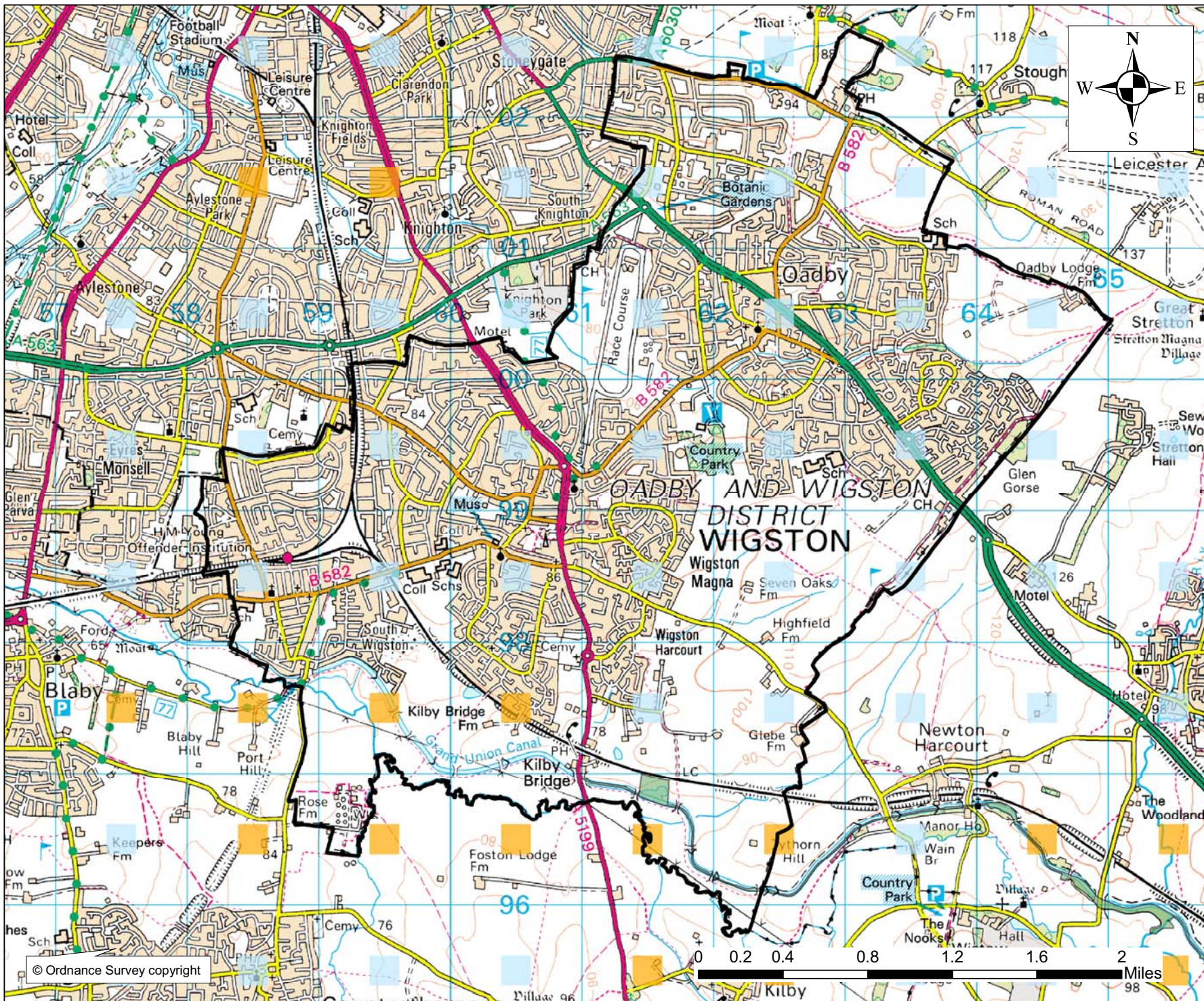


IT Power, Grove House,
Lutyns Close,
Chineham, Hants.
RG24 8AG, UK
itpower@itpower.co.uk
Tel. +44 1256 392700
Fax. +44 1256 392701

© IT Power copyright 2008

© Ordnance Survey copyright

0.3 0.7 1.4 2.1 2.8 3.5
Miles



Legend

- Borough Boundary
- Sites of Special Scientific Interest
- Windspeed @45m**
 - < 5 m/s
 - 5.0 - 6.0 m/s
 - 6.1 - 7.0 m/s
 - 7.1 - 8.0 m/s
 - > 8 m/s

File name 1017 Planning for Climate Change Study
Version 1.0
Date April 2008

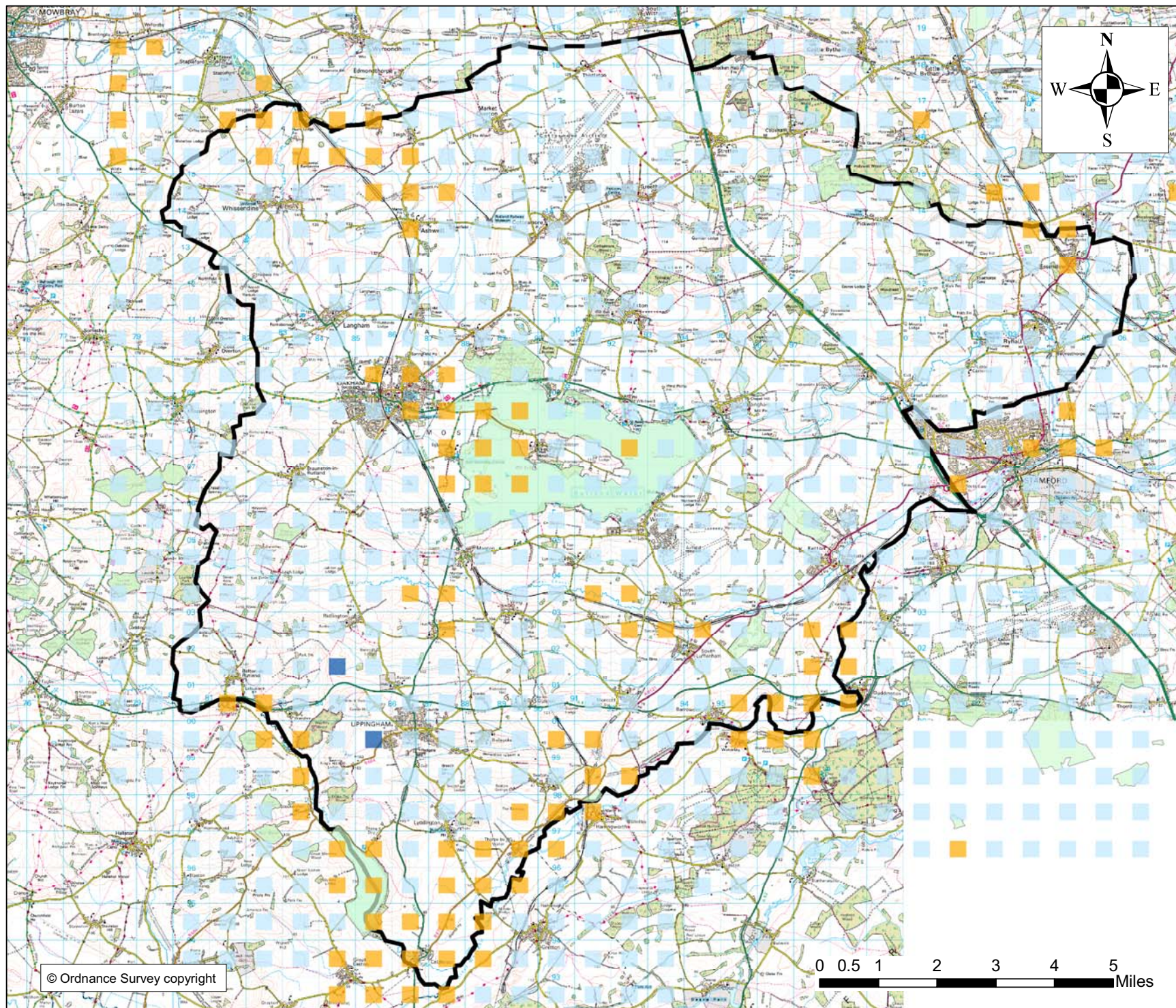
Drawing title:

NOABL database wind speeds for
Oadby and Wigston Borough Council
at 45m above ground level





IT Power, Grove House,
Lutens Close,
Chineham, Hants.
RG24 8AG, UK
itpower@itpower.co.uk
Tel. +44 1256 392700
Fax. +44 1256 392701



© IT Power copyright 2008



Legend

-  Council Boundaries
-  Sites of Special Scientific Interest

Windspeed @45m

-  < 5 m/s
-  5.0 - 6.0 m/s
-  6.1 - 7.0 m/s
-  7.1 - 8.0 m/s
-  > 8 m/s

File name 1017 Planning for Climate Change
Version 1.0
Date April 2008

Drawing title:

NOABL database wind speeds for
Rutland County Council
at 45m above ground level



IT Power, Grove House,
Lutens Close,
Chineham, Hants.
RG24 8AG, UK
itpower@itpower.co.uk
Tel. +44 1256 392700
Fax. +44 1256 392701

© IT Power copyright 2008