



www.landuse.co.uk

Melton Local Plan Addendum of Focussed Changes

Sustainability Appraisal Addendum: Non-Technical Summary

Prepared by LUC
June 2017

Planning & EIA
Design
Landscape Planning
Landscape Management
Ecology
Mapping & Visualisation

LUC BRISTOL
12th Floor Colston Tower
Colston Street Bristol
BS1 4XE
T +44 (0)117 929 1997
bristol@landuse.co.uk

Offices also in:
London
Glasgow
Edinburgh



Land Use Consultants Ltd
Registered in England
Registered number: 2549296
Registered Office:
43 Chalton Street
London NW1 1JD
LUC uses 100% recycled paper

Project Title: Sustainability Appraisal of the Melton Local Plan

Client: Melton Borough Council

Version	Date	Version Details	Prepared by	Checked by	Approved by
1	29/06/17	Non-Technical Summary of the SA Addendum for the Melton Local Plan Addendum of Focussed Changes – for internal review	Kieran Moroney	Kieran Moroney	
2	30/06/17	Non-Technical Summary of the SA Addendum for the Melton Local Plan Addendum of Focussed Changes – for publication	Kieran Moroney	Jeremy Owen	Jeremy Owen

Contents

1	Introduction	3
2	SA of housing growth options arising from 2017 HEDNA	5
3	SA of Melton Mowbray distributor road options	7
	Summary of SA findings for the two distributor road options considered	8
4	SA of additional sites	10
5	Amendments to SA findings following focussed changes	15
	Overview of the focussed changes	15
	Summary of changes to SA findings for the sites following the focussed changes	20
	Reasons for changes, inclusion or discounting of sites in focussed changes	28
	Overall Spatial Strategy	29
6	Next steps	30

1 Introduction

- 1.1 This Sustainability Appraisal Addendum: Non-Technical Summary relates to the Melton Local Plan, which is being prepared by Melton Borough Council. It is to be read as an addendum to the Sustainability Appraisal Report: Non-Technical Summary which LUC prepared on behalf of Melton Borough Council in October 2016. The Addendum and supporting Non-Technical Summary are presented as part of the integrated Sustainability Appraisal (SA) and Strategic Environmental Assessment (SEA) of the Melton Local Plan.
- 1.2 The SA Addendum builds on the findings of the SA Report¹ that LUC produced previously on behalf of Melton Borough Council for the Pre-Submission Draft version of the Local Plan (November 2016) and it should therefore be read in conjunction with those documents.
- 1.3 The SA Addendum has four purposes:
 - It considers the implications for the SA findings reported previously as a result of new housing requirement options arising from the recent publication of the Leicestershire HMA HEDNA² and the bridging document 'Towards a Housing Requirement for Melton Borough' and its addendum³ (see **Chapter 2**).
 - It sets out the findings of the appraisal of two options for the Melton Mowbray distributor road – a western option and an eastern option (see **Chapter 3**).
 - It presents the appraisal of 18 additional sites that have emerged since the Pre-Submission Draft Local Plan was originally published (see **Chapter 4**).
 - It sets out the updated likely sustainability effects of policy changes and for sites which are now included in the Local Plan following the focussed changes proposed by the Council. These include the inclusion of new sites for allocation and reserve as well as amendments to existing site boundaries and site capacities originally presented in the Pre-Submission Draft Local Plan (see **Chapter 5**).
- 1.4 The SA framework for the Melton Local Plan and the 17 SA objectives that have been used to guide the SA work are shown in Table 1.2 of the full SA Addendum.
- 1.5 Throughout the SA process, SA matrices and clear colour coded scores have been used to present the findings in relation to how policies and sites perform against each of the 17 SA objectives. **Figure 1.1** below shows the key for the colour coding used.

¹ LUC (October 2016) Pre-Submission Draft Melton Local Plan. Sustainability Appraisal Report

² GL Hearn for Melton BC (January 2017) Housing & Economic Development Needs Assessment: Leicester and Leicestershire Authorities and the Leicester and Leicestershire Enterprise Partnership. (this has superseded the previous 2014 SHMA)

³ GL Hearn for Melton BC (January 2017) Towards a Housing Requirement for Melton Borough

Figure 1.1: Key to colour coding used in SA matrices

++	The option or policy is likely to have a significant positive effect on the SA objective(s).
+	The option or policy is likely to have a positive effect on the SA objective(s).
0	The option or policy is likely to have a negligible or no effect on the SA objective(s).
-	The option or policy is likely to have a negative effect on the SA objective(s).
--	The option or policy is likely to have a significant negative effect on the SA objective(s).
?	It is uncertain what effect the option or policy will have on the SA objective(s), due to a lack of data.
++/-	The option or policy is likely to have a mixture of significant positive and minor negative effects on the SA objective(s).
+/-	The option or policy is likely to have a mixture of minor positive and minor negative effects on the SA objective(s).
+/--	The option or policy is likely to have a mixture of minor positive and significant negative effects on the SA objective(s).

2 SA of housing growth options arising from 2017 HEDNA

- 2.1 Following publication by GL Hearn of the Leicestershire Housing and Economic Development Needs Assessment (HEDNA) and the bridging document 'Towards a Housing Requirement for Melton Borough' and its addendum the Council is considering the implications of new housing figures in line with the findings of these reports.
- 2.2 The three housing growth options considered by the Council following the publication of the HEDNA and subsequent supporting work as detailed above are to provide the following number of new dwellings per annum (dpa):
- Option 1: 154 dpa (in line with demographic need also considering an affordability adjustment).
 - Option 2: 245 dpa (above the objectively assessed need identified in the HEDNA which would thereby take economic led growth and demographic need into consideration).
 - Option 3: 280 dpa (also above the objectively assessed need identified in the HEDNA as well as allowing affordable housing need in Melton to be met at a delivery rate of 25% of overall housing delivery).
- 2.3 A summary of the likely sustainability effects identified for each option considered is presented in **Table 2.1** below. A full summary of the SA findings for these options is presented in Chapter 2 of the full SA Addendum. Appendix 1 of the full SA Addendum presented the detailed assessment of housing growth options considered.

Table 2.1: Summary of SA findings for the three housing growth options considered

SA objectives	Option 1: 154 dpa	Option 2: 245 dpa	Option 3: 280 dpa
1. Housing	+/--	++/-	++
2. Education	-	++	++
3. Sustainable transport	--	++	++
4. Economy and employment	--	++	++
5. Landscape	-?	--?	--?
6. Biodiversity and geodiversity	-?	--?	--?
7. Cultural heritage	-?	--?	--?
8. Efficient use of land and minerals	-?	--?	--?

SA objectives	Option 1: 154 dpa	Option 2: 245 dpa	Option 3: 280 dpa
9. Access to services	-	+	+
10. Social and economic inclusion	--	++/-	++
11. Crime	0	0	0
12. Waste	+?	-?	-?
13. Economic growth	--	++	++
14. Health	-	+	+
15. Greenhouse gases and air quality	0	0	0
16. Flood risk	?	?	?
17. Water quality	0	0	0

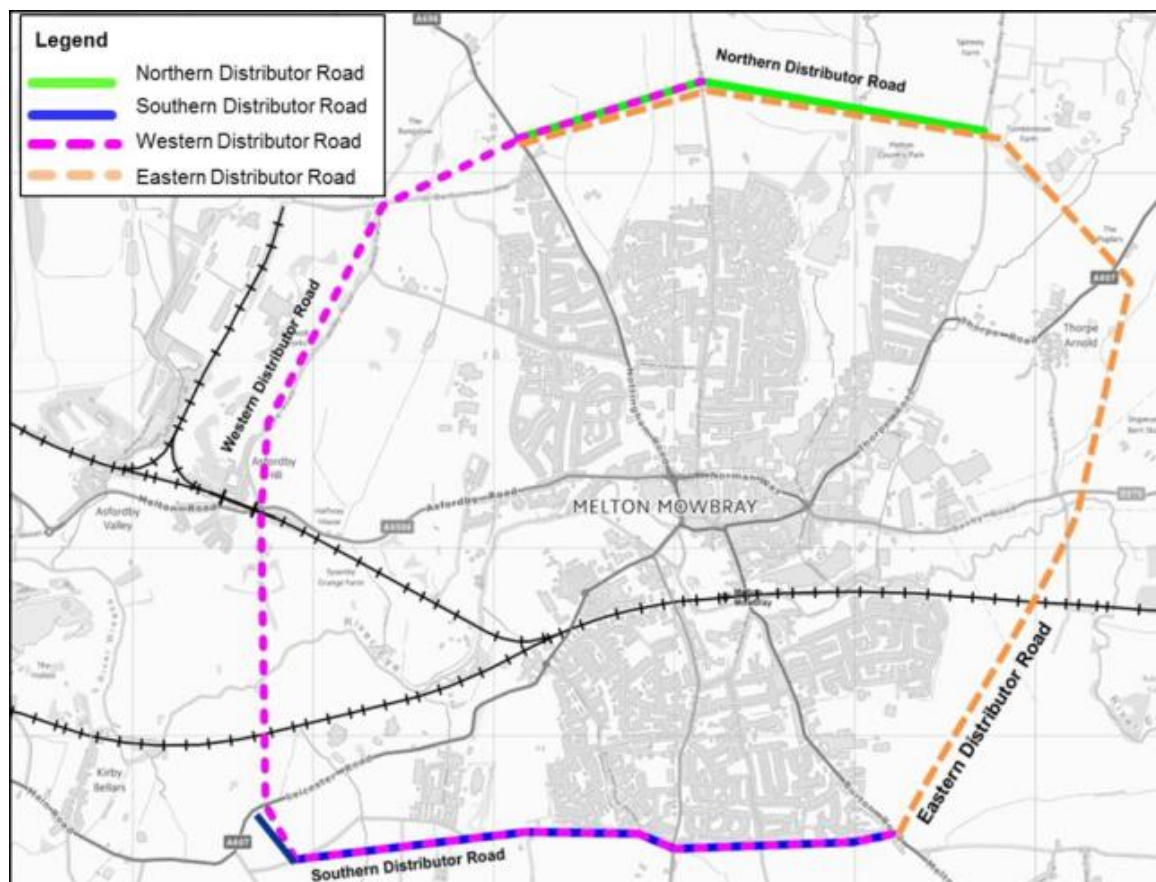
Conclusion

- 2.4 Providing for lower level of housing (Option 1: 154 dpa) over the plan period would help to avoid the most adverse effects which are expected to result through the provision of higher levels of development (through both Option 2: 245 dpa and Option 3: 280 dpa) in terms of the natural environment (SA objectives 5, 6, 7 and 8). It is considered that this approach would result in a marked reduced loss of greenfield land, and have reduced potential to have detrimental impacts on local habitats, landscape quality and local character and the significance of local heritage assets and their settings.
- 2.5 Option 1 would however not allow for a level of housing development over the plan period to support the growth of the local economy, provision of the required number of affordable homes and support for investment in transport infrastructure and increased viability of the local sustainable transport network. As such Option 1 performs significantly worse than Option 2 and Option 3 with regard to SA objectives 1, 3, 4, 10 and 13. Contrasting effects are also expected in relation to the performance of Option 1 and Options 2 and 3 in relation to supporting the provision of viable local services (including healthcare provision) and particularly education provision given that new infrastructure provision in Melton is likely to require for higher levels of housing to support this provision.
- 2.6 Option 2 and Option 3 perform similarly across most of the SA objectives given that these options would provide for only marginally different numbers of houses annually. Option 3 is expected to perform more positively in relation to the provision of affordable housing and the associated effect this will likely have in terms of addressing deprivation in the Borough. Providing for 280 dpa through Option 3 would mean that the required level of 70 dpa as affordable housing could be achieved at 25% of overall housing delivery over the plan period. Option 2 would be less likely to address the provision of affordable housing in Melton over the plan period and therefore this option is expected to perform less favourably for SA objectives 1 and 10.

3 SA of Melton Mowbray distributor road options

- 3.1 The document 'Melton Mowbray Distributor Road Option Assessment Report' produced by Jacobs⁴ on behalf of the Council considers the potential for the provision of a new distributor road around the town. To help inform the Council in its consideration of a new distributor road, LUC has undertaken sustainability appraisal of options put forward for this route. The SA findings LUC have previously reported on behalf of Melton Borough Council in the October 2016 SA Report have been drawn upon and supplemented in the conclusions of the SA Addendum.
- 3.2 The focus of the additional SA work which relates to two distributor road options considered by the Council making use of the Jacobs report are as follows (see **Figure 3.1** reproduced from Figure 1.1 of the Jacobs report) outside of the Northern and Southern Distributor Road options:
- Option A: Western Distributor Road (to the west of Melton Mowbray from Nottingham Road (A606) to Leicester Road (A607)).
 - Option B: Eastern Distributor Road (to the east of Melton Mowbray easterly from Melton Spinney Road to Burton Road (A606)).
- 3.3 The Northern Distributor Road and Southern Distributor Road already form part of the proposals for the Melton Mowbray South Sustainable Neighbourhood (Policy SS4) and Melton Mowbray North Sustainable Neighbourhood (Policy SS5) which were appraised in the SA of the Pre-Submission Draft Melton Local Plan.

Figure 3.1: Distributor road options



⁴ Jacobs (July 2016) Melton Mowbray Distributor Road Options Assessment Report

Summary of SA findings for the two distributor road options considered

- 3.4 The likely sustainability effects of providing the two distributor road options over the plan period have been considered in detail through the SA Addendum and complete findings of the appraisal are presented in Appendix 2 of the full SA Addendum document. **Table 3.1** below presents the summary of the likely sustainability effects identified. A complete summary of the likely sustainability effects of both road options is presented in Chapter 3 of the full SA Addendum.

Table 3.1: Summary of SA findings for the two distributor road options considered

SA objectives	Option A: Western Distributor Road	Option B: Eastern Distributor Road
1. Housing	0	0
2. Education	0	0
3. Sustainable transport	+/-	++/-
4. Economy and employment	++/-	++
5. Landscape	-?	--?
6. Biodiversity and geodiversity	-?	--?
7. Cultural heritage	--?	-?
8. Efficient use of land and minerals	-	-
9. Access to services	0	0
10. Social and economic inclusion	0	0
11. Improve community safety	+	++
12. Waste	0	0
13. Economic growth	++/-	++
14. Health	0	0
15. Greenhouse gases and air quality	+/--	++/--
16. Flood risk	-	-
17. Water quality	0	0

Conclusion

- 3.5 It is expected that Option A: Western Distributor Road and Option B: Eastern Distributor Road would result in a mix of effects. While both options could result in a higher volume of private vehicles making use of the improved road infrastructure around Melton Mowbray which would likely have adverse impacts in terms of local air quality, Option B has been identified as having increased potential for improvements to public transport viability and easing local congestion. As such this option performs more positively with regard SA objectives 3 and 15.
- 3.6 The potential to ease local congestion as well as improving links to important existing links to industrial sites to the east of the town means that Option B would also reduce the potential for the combined negative effects expected for Option A in relation to SA objectives 4 and 13. While Option A would provide for improved links to the important centres of Leicester and Nottingham it is expected that this option would be less likely to address congestion at junctions which are most adversely impacted upon at present which could reduce the potential for improved economic growth and the ability of residents to access employment opportunities. Providing for improvements to a higher number of problematic junctions through Option B is also likely to help improve road safety in Melton and therefore this option is also expected to perform more favourably than Option A for SA objective 11.
- 3.7 Option A is expected to perform less favourably than Option B in relation to potential impacts on cultural heritage in the Borough as it would run in close proximity to a number of identified heritage assets. Option B, however, has the potential for more significant adverse impacts in terms of the local landscape quality and biodiversity features given that the route to the east would pass through an Area of Separation and landscapes of medium to high sensitivity as well as a SSSI.

4 SA of additional sites

- 4.1 Following the publication of the Pre-Submission Draft Local Plan 18 additional sites have come forward for consideration. These 18 sites were considered as additional reasonable alternatives to be potentially included for allocation in the Melton Local Plan and as such were subjected to site assessment work as part of the Strategic Housing Land Availability Assessments 2017 process. The Council supplied the 'Site Assessment Updates and Suggested Modifications to Site Allocations Report' (Jun 2017)⁵ to provide more detail for these sites and provide reasoning for the relevant rejection or inclusion of such sites for allocation or reserve. The reasons for rejection or inclusion of sites considered are summarised in this Non-Technical Summary and provided in more detail in Chapter 5 of the full SA Addendum.
- 4.2 As part of the process of considering these additional sites the likely sustainability effects have been presented in the SA Addendum. The SA findings reported on previously by LUC on behalf of Melton Borough Council in the October 2016 SA Report have been drawn upon in the SA Addendum. The Addendum supplements the previously presented findings.
- 4.3 The 18 additional sites considered and the summary of the likely sustainability effects against each SA objective that are expected for each option are presented in **Table 4.1** below. A completed summary of the likely sustainability effects is presented in Chapter 4 of the full SA Addendum. The detailed matrices presenting the SA findings for each additional site are included in Appendix 3 of the full SA Addendum.

⁵ Melton BC (June 2017) Site Assessment Updates And Suggested Modifications To Site Allocations Report



Site code	SA objectives																
	1. Housing	2. Education	3. Sustainable transport	4. Economy and employment	5. Landscape	6. Biodiversity and geodiversity	7. Cultural heritage	8. Efficient use of land and minerals	9. Access to services	10. Social and economic inclusion	11. Crime	12. Waste	13. Economic growth	14. Health	15. Greenhouse gases and air quality	16. Flood risk	17. Water quality
Ab Kettleby Options																	
MBC/002/17	+	+++	+	-	--?	--?	0?	-	+	++/-	0	-	0	0	+	-	0
MBC/008/17	+	+++	0	-	--?	--?	0	-	+	++/-	0	-	0	0	+	-	0
Asfordby Hill Options																	
MBC/028/17	+	+++	++	+	-?	--?	0	+?/-	+	++	0	+	0	0	+	0	0
Gaddesby Options																	
MBC/005/17	+	++?	+	-	--?	--?	0?	--	+	+/-	0	-	0	0	+	-	0
Great Dalby Options																	
MBC/003/17	+	+++	+	-	--?	--?	0?	--?	+	++/-	0	-	0	0/--?	+	-	0
Harby Options																	
MBC/012/17	+	+++	+	-	-?	--?	0	--?	++	++/-	0	-	0	0	++	-	0
Hose Options																	
MBC/010/17	+	+++	+	+	-?	--?	0?	--?	++	++	0	-	0	0/--?	++	-	0

Site code	SA objectives																
	1. Housing	2. Education	3. Sustainable transport	4. Economy and employment	5. Landscape	6. Biodiversity and geodiversity	7. Cultural heritage	8. Efficient use of land and minerals	9. Access to services	10. Social and economic inclusion	11. Crime	12. Waste	13. Economic growth	14. Health	15. Greenhouse gases and air quality	16. Flood risk	17. Water quality
MBC/027/17	+	+++	+	-	-?	--?	0?	--?	++	++/-	0	-	0	0	++	-	0
Long Clawson Options																	
MBC/026/17	+	+++	+	-	--?	--?	0?	-	++	++/-	0	-	0	++	++	-	0
Melton Mowbray Options																	
MBC/021/17	+	+++	++	++	?	--?	0	++	++	++	0	+	0	+	++	0	0
MBC/022/17	+	+++	++	++	?	--?	--?	++	++	++	0	+	0	++	++	--?	0
MBC/023/17	+	+++	++	++	?	-?	0	-	++	++	0	-	0	+/--?	++	-	0
Old Dalby Options																	
MBC/001/17	+	+++	+	-	--?	--?	--?	-	++	++/-	0	-	0	0	++	-	0
MBC/004/17	+	+++	0	-	--?	--?	0?	-	++	++/-	0	-	0	0/--?	++	-	0
MBC/030/17	+	+	0	+	?	--?	0	-	++	+	0	-	0	0	++	-	0
Scaford Options																	
MBC/018/17	+	+++	0	-	-?	--?	0?	-	++	++/-	0	-	0	0	++	-	0

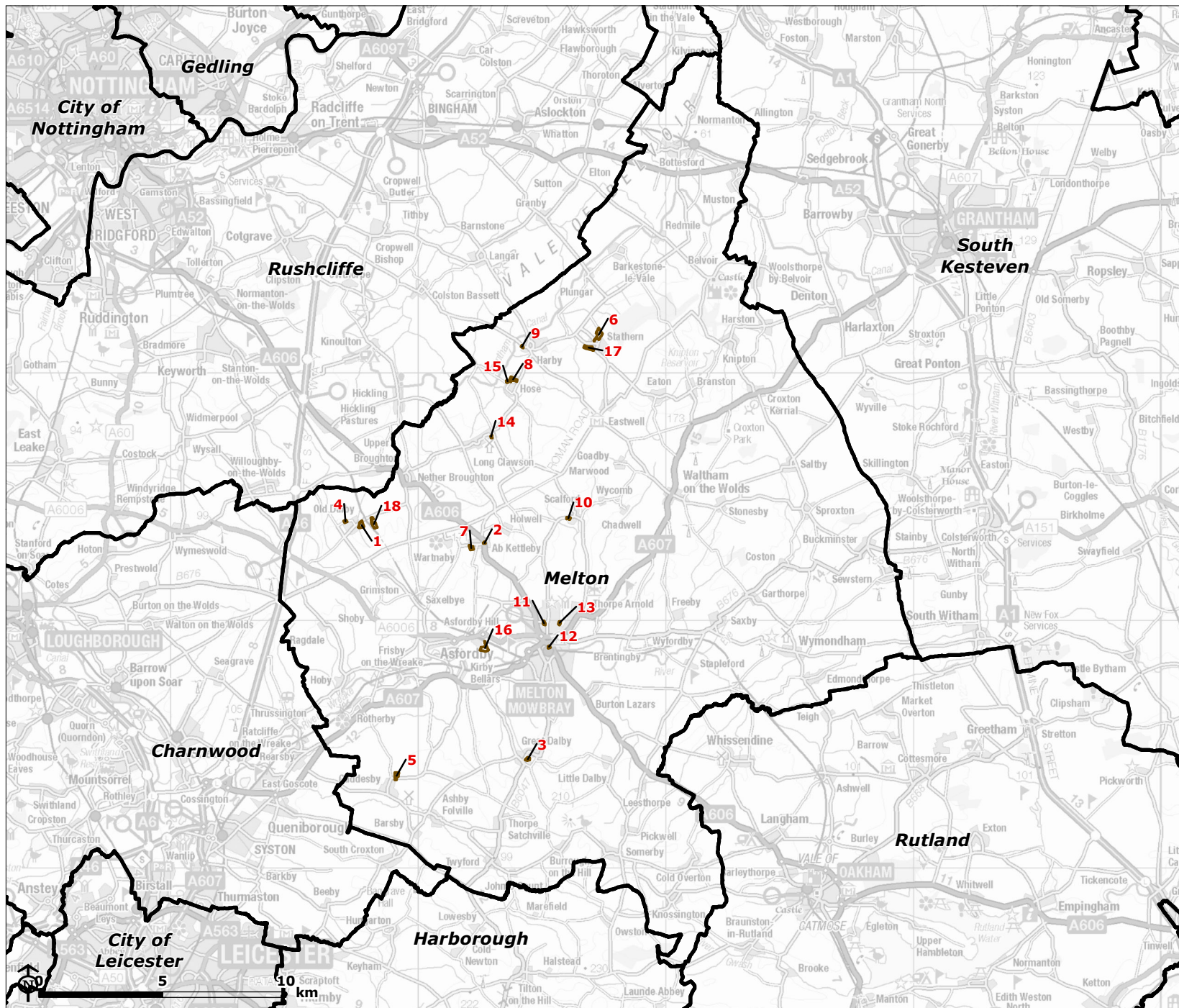
Site code	SA objectives																
	1. Housing	2. Education	3. Sustainable transport	4. Economy and employment	5. Landscape	6. Biodiversity and geodiversity	7. Cultural heritage	8. Efficient use of land and minerals	9. Access to services	10. Social and economic inclusion	11. Crime	12. Waste	13. Economic growth	14. Health	15. Greenhouse gases and air quality	16. Flood risk	17. Water quality
Stathern Options																	
MBC/006/17	+	+++?	+	-	-?	--?	0?	-	++	++/-	0	-	0	0/--?	++	-	0
MBC/029/17	+	+++?	+	-	-?	--?	-?	-	++	++/-	0	-	0	0	++	--	0

Figure 4.1

Additional Sites Subject to SA

-  District boundary
 -  Additional sites subject to SA
1. MBC/001/17
 2. MBC/002/17
 3. MBC/003/17
 4. MBC/004/17
 5. MBC/005/17
 6. MBC/006/17
 7. MBC/008/17
 8. MBC/010/17
 9. MBC/012/17
 10. MBC/018/17
 11. MBC/021/17
 12. MBC/022/17
 13. MBC/023/17
 14. MBC/026/17
 15. MBC/027/17
 16. MBC/028/17
 17. MBC/029/17
 18. MBC/030/17

Map Scale @ A4: 1:220,000



5 Amendments to SA findings following focussed changes

- 5.1 In light of focussed changes currently proposed by the Council LUC has been commissioned to review the findings of the SA Report for the Pre-Submission Draft of the Melton Local Plan which were originally presented in October 2016. This review aims to establish whether any the focussed changes could result in additional or changed likely significant effects of the Local Plan. As such the findings relating to the focussed changes should be considered in light of those presented in October 2016 SA Report.

Overview of the focussed changes

- 5.2 It is understood that the focussed changes would modify the following policies:
- Policy SS2 - Development Strategy
 - Policy SS3 – Sustainable Communities (unallocated sites)
 - Policy SS4 - South Melton Mowbray Sustainable Neighbourhood
 - Policy SS5 - Melton Mowbray North Sustainable Neighbourhood
 - Policy C1(a) – Housing Allocations
 - Policy C1(b) – Reserve Sites
 - Policy C2 – Housing Mix
 - Policy C4 - Affordable Housing Provision
 - Policy C6 - Gypsies and Travellers
 - Policy IN2 (this was previously titled IN1) - Transport & Strategic Transport Infrastructure
 - Policy IN3 (this was previously titled IN2) - Infrastructure Contributions and Community Infrastructure Levy
- 5.3 An additional policy (IN1) in relation to transport infrastructure is also proposed to be included in the plan. A summary of the focussed changes to the policies in question including how the focussed changes will be reflected is shown below in **Table 5.1**.

Table 5.1: Summary of the focussed changes to the plan currently proposed by the Council

Policy	Summary of focussed changes
SS2	In relation to the encouragement of small scale development over the plan period reference to supporting development ' <i>of 10 dwellings or less outside of the allocations in Service Centres, or 5 dwellings or less for the Rural Hubs</i> ' removed.
	Sub-section relating to 'Small-scale Unallocated Development' which addressed development defined as ' <i>10 dwellings at Services Centres, 5 dwelling at Rural Hubs and 3 dwelling at Rural Settlements</i> ' outside of allocated sites removed. The policy still requires that development at small unallocated sites accords with Policy SS3 which establishes the appropriate thresholds for such schemes.
SS3	Minor wording changes and re-ordering of text.

Policy	Summary of focussed changes
SS4	Reference to 20 minute frequency of buses to be deleted.
	Move the southern boundary of the sustainable neighbourhood to accord with the boundary of planning application ref. 16/00515/OUT
	In h1, replace reference to ' <i>37% of which should be affordable</i> ', with ' <i>at least 15% of which should be affordable</i> ', and take the subsequent, ' <i>subject to viability clause</i> ' out.
SS5	Reference to 20 minute frequency of buses to be deleted.
	The provision of a Melton Country Park Greenway to be deleted from Policy IN1 and incorporated into Policy SS5. Text to read as follows: ' <i>The Melton Park Greenway – a series of measures that improve accessibility and the attractiveness of walking and cycling connections through the Melton Country Park to the town centre and other town attractors such as employment, education and retail.</i> '
	Under 'Environment' new text be inserted as follows (italics): ' <i>Protection and enhancement to the existing green infrastructure, local wildlife sites, wildlife corridors and, where appropriate, provide new corridors to create a coherent network of biodiversity and green infrastructure, providing links from existing green infrastructure to the countryside, specifically Melton Country Park, Scalford Brook and Welby Brook and the disused railway line.</i> '
	Also under 'Environment', new text to be inserted as follows (italics): ' <i>Establish a protection zone between Melton Country Park and any future development. Development should respond to the local topography and utilise it to define the protection zone. This zone should also include the provision of an undeveloped area of land between part of the existing northern boundary of the park and the proposed distributor road.</i> '
	In h1, replace reference to ' <i>37% of which should be affordable</i> ', with ' <i>at least 15% of which should be affordable</i> ', and take the subsequent, ' <i>subject to viability clause</i> ' out.
C1(a)	Site Boundary Update - MEL2; MEL3; MEL6; ASF1; CROX2; HAR1; HAR3; HAR4; HOS1; LONG1; OLD1; STAT1; WYM1; EAST1; FRIS1; GADD1
	Potential Capacity Update - MEL3; MEL10; BOT1; BOT2; BOT3; BOT4; CROX1; CROX2; CROX3; HAR3; HAR4; HOS1; LONG3; OLD1; STAT1; WYM2; WYM3; ASFH1; FRIS1; FRIS2; FRIS3; THOR1
	Removal of sites - MEL6; MEL9; & MEL12; ASF3; BOT1; HAR3; HOS2; HOS3; LONG2; OLD2; GADD2
	New Sites included - MEL4; HAR3; extension to HOS1; HOS2; SCAL1; extension to STAT1; GADD3; GREA1 THOR2
	Re-numbering - MEL7 (previously MEL3); MEL3 (previously MEL4); MEL10 (previously MEL5); MEL5 (previously MEL7); MEL6 (previously MEL8); MEL8 (previously MEL10); MEL9 (previously MEL11); BOT1 (previously BOT2); BOT2 (previously BOT3); BOT3 (previously BOT4); BOT4 (previously BOT5); HAR3 (previously HAR6 Reserve); HAR4 (previously HAR4 & HAR5); GADD2 (previously GADD3)
	Changes to policy text to include further mitigation relating to the historic environment

Policy	Summary of focussed changes
	but no change site boundaries or capacities – ASF2; SOM1; STAT2
C1(b)	Site Boundary Update – None
	Potential Capacity Update - OLD2
	Removal of sites - HAR6 Reserve; THOR2 Reserve; FRIS4 Reserve
	New Sites included - HAR5 Reserve; STAT3 Reserve
	Re-numbering - OLD2 Reserve (previously OLD3 Reserve); MEL11 Reserve (Previously MEL13 Reserve)
C2	Last clause relating to wheelchair accessible dwellings - replace ' <i>will be required</i> ' with ' <i>will be encouraged</i> '
C4	Reduce the number of affordable dwellings to be provided during the plan period from 1,775 to 1,300.
	The percentage of affordable housing to be provided will vary according to location (value areas).
C6	Include sentence: ' <i>The most recent GTAA will be used to identify pitch and plot requirements and where a need is found, steps will be taken to deliver sites.</i> '
IN1	<p>New policy:</p> <p><i>'The Borough Council will work with Leicestershire County Council, landowners, developers and others to deliver a transport strategy for Melton Mowbray. The MMTS will comprise the following key components, to be funded and delivered by private developers and the public sector:</i></p> <p>(a) <i>A Melton Mowbray Distributor Road (MMDR) from the A606 Nottingham Road to the A607 Leicester Road around the east of the town, in accordance with the broad design standards and requirements outlined in paragraph 8.3.17, for which a 'corridor of investigation' is shown on the Policies Map; and</i></p> <p>(b) <i>A package of complementary measures, including enhanced pedestrian, cycling and public transport facilities and access to the town centre and the other main local journey attractors from the southern and northern urban extensions.</i></p> <p><i>If development is proposed within the corridor shown on the Policies Map, it will be permitted provided that it has been demonstrated to the satisfaction of the Local Highway Authority that it would not prejudice the ability to deliver the MMDR as a whole.</i></p> <p><i>Where necessary, the Council and/or the Local Highway Authority will use its compulsory purchase powers to deliver section(s) of the MMDR.</i></p> <p><i>Where a transport assessment indicates that development will add to the cumulative traffic and other transport problems of Melton Mowbray, a financial or in kind contribution will be sought towards delivery of the MMDR and/or complementary measures proposed through the wider MMTS, including appropriate mitigation necessary to reduce local traffic impacts whilst the MMDR is incomplete.</i></p> <p><i>The Borough Council will also work with other bodies to explore opportunities to enhance the public realm in and around Melton Mowbray town centre arising from the development of the Strategy.'</i></p>
IN2	The provision of a Melton Country Park Greenway should be deleted from Policy IN1

Policy	Summary of focussed changes
	(now IN2) and incorporated into Policy SS5.
	Reference for requirement ' <i>to contribute to transport improvements in line with appropriate evidence</i> ' removed.
	Delete the section on Melton Mowbray (now replaced by new Policy IN1).
IN3	Replace reference in Policy IN2 (now IN3) to ' <i>Eastern Distributor Road</i> ' with reference to ' <i>the Melton Mowbray Transport Strategy and its key component, the Melton Mowbray Distributor Road</i> '.

- 5.4 The focussed changes presented above are likely to have impacts on the sustainability findings both in relation to policies and sites considered previously in the SA Report for the Pre-Submission Draft of the Melton Local Plan.
- 5.5 The sustainability implications of the proposed focussed changes to the policies originally presented in the Pre-Submission Draft of the Melton have been considered in detail in **Appendix 4** of the full SA Addendum. The updated likely sustainability effects presented at this point relate to all policies excluding Policy C1(a) and Policy C1(b). Policies C1(a) and C1(b) address those sites which have been allocated under the focussed changes in the Local Plan and those sites which are included under the focussed changes in the Local Plan as reserve sites. They include new sites, those sites for which new boundaries are proposed and those sites for which a new dwelling capacity has been proposed. This Non-Technical Summary has been structured as to present all updates to the sites together and therefore the sustainability findings for Policies C1(a) and C1(b) are presented in following subsection.
- 5.6 A summary of the likely sustainability effects identified for all other policies which are affected by the focussed changes is presented in **Table 5.2** below. Those scores which are highlighted by the **bold borders** of this table denote changes to the likely sustainability effects expected as a result of focussed changes proposed by the Council.
- 5.7 It should be noted that some of SA scores (most notably **SA objective 7: cultural heritage**) for Policy for IN1 differ from those for the Eastern Distributor Road Option B presented previously in Chapter 2. This difference in scores has been recorded as although the Eastern Distributor Road Option B takes up much of the land addressed through Policy IN1, the policy includes mitigation in relation to various detrimental impacts which may result. The 'corridor of investigation' which is proposed through Policy IN1 also takes in a significantly larger area of land than that which is included for consideration through the Eastern Distributor Road Option B as such meaning that there is potential for increased adverse impacts in terms of the SA objectives against which it has been appraised, most notably in terms of the historic environment.
- 5.8 As shown by Table 5.2 most of the focussed changes would not result in changes to the expected sustainability effects for the policies in question. This is because the focussed changes relate mostly to the reordering of text within policies for clarity and where the changes go beyond this they are minor for the most part.

Table 5.2: Summary of likely sustainability effects of the policies subject to amendment following the Council’s proposed focussed changes

Policy (as numbered following the Council’s proposed focussed changes)	SA objectives																
	1. Housing	2. Education	3. Sustainable transport	4. Economy and employment	5. Landscape	6. Biodiversity and geodiversity	7. Cultural heritage	8. Efficient use of land and minerals	9. Access to services	10. Social and economic inclusion	11. Crime	12. Waste	13. Economic growth	14. Health	15. Greenhouse gases and air quality	16. Flood risk	17. Water quality
Policy SS2	++	++/-	++	++	+/--?	+/--?	--?	--?	++/-	+/-	0	-?	++	++/-	++	-?	?
Policy SS3	+	+	+/-	+	+/-	+	+	+	++	+	0	0	+	+/-	-	+	0
Policy SS4	++	++	++/-	++	+/--?	+/--?	+/--?	+/--	++	++	+	0	++	++	++/-	+/-	+
Policy SS5	++	++	++/-	++	+?/--	+/--?	+/-?	+/--	++	++	+	0	++	++	++/-	+/-	+
Policy C2	++	0	0	0	0	0	0	0	+	0	0	0	0	+	0	0	0
Policy C4	++/-	0	0	0	0	0	0	0	++/-	0	0	0	0	0	0	0	0
Policy C6	++	0	+	0	+/-?	+/-?	+/-?	?	+	0	0	0	0	+	0	+	0
Policy IN1	0	0	++/-	++	+/--	+/--	+/--?	-	+	+	+	0	++	+	++/-	-	0
Policy IN2	0	0	++	+	0	0	0	0	+	+	0	0	+	+	++	0	0
Policy IN3	+	+	+/-	0	0	+	0	0	+	0	0	0	++	+	+/-	+	+

Summary of changes to SA findings for the sites following the focussed changes

- 5.9 The focussed changes proposed by the Council would provide for the amendment of those sites which are now included for allocation in the Local Plan. These changes are in line with the changes to Policy C1(a) and Policy C1(b) and the associated Appendix 1 in the Melton Local Plan. The changes which have been presented above in Table 5.1 are identified as to include the following:
- Sites with boundary updates.
 - Sites with capacity changes.
 - Sites deleted from the Local Plan;
 - New sites included in the Local Plan.
 - Sites which are now re-numbered.
- 5.10 The detailed matrices for new sites and sites which have been subject to amendments in terms of boundary or capacity are presented in Appendix 5 of the full SA Addendum.
- 5.11 **Table 5.3** overleaf presents a summary of the likely sustainability effects of all sites now allocated in the Local Plan or included as reserve sites in the Local Plan taking into considering the focussed changes. Those sites which have been subject to a boundary change or capacity change which has resulted in a change in the likely sustainability effects as well as new sites are highlighted in the table by bold borders. Sites which have been subject to a boundary change or capacity change which has not resulted in a change to the likely sustainability effects are denoted with an asterisk. Where sites were previously included in the Local Plan and a subsequent change in the site code has resulted, the previous site code is presented in brackets beside the site code which is now relevant for ease of reference.
- 5.12 The full SA Addendum also presents the likely sustainability effects of those sites which have now been deleted from the Local Plan as a result of the proposed focussed changes. Those reasonable alternatives which have been considered as part of the appraisal of the additional sites coming forward as part of to the Strategic Housing Land Availability Assessments 2017 process but rejected for inclusion in the Local Plan are also presented in the full SA Addendum. A summary of the sustainability effects expected for both of these sets of sites is shown in Table 5.4 and Table 5.5 of the SA Addendum respectively. The sites included are as follows:
- Sites originally included in the Pre-Submission Draft Local Plan but now deleted: ASF3, BOT1, GADD2, HAR3, HOS2, LONG2, MEL6, MEL9, MEL12, OLD2, FRIS4 Reserve, HAR6 Reserve, THOR2 Reserve.
 - Sites considered as reasonable alternatives following the Council's assessment of additional sites but not included in the Local Plan: MBC/001/17, MBC/002/17, MBC/004/17, MBC/005/17, MBC/006/17, MBC/008/17, MBC/022/17, MBC/023/17 MBC/026/17, MBC/028/17, MBC/030/17,

Table 5.3 Summary of likely sustainability effects of all sites now allocated in the Melton Local Plan following the proposed focussed changes

Sites code following focussed changes (and in Pre Submission Draft Local Plan)	SA objectives																
	1. Housing	2. Education	3. Sustainable transport	4. Economy and employment	5. Landscape	6. Biodiversity and geodiversity	7. Cultural heritage	8. Efficient use of land and minerals	9. Access to services	10. Social and economic inclusion	11. Crime	12. Waste	13. Economic growth	14. Health	15. Greenhouse gases and air quality	16. Flood risk	17. Water quality
Melton Mowbray																	
MEL1	+	++	?	?	-?	-?	?	-	++	+++?	0	-	0	+	++	-	0
MEL2	++	++	++	++	?	-?	0	+	++	++	0	+	0	++	++	0	0
MEL3 (MEL4)	+	++	++	+	--?	--?	0	-	++	++	0	-	0	+	++	-	0
MEL4	+	+++?	++	++	?	--?	0	++	++	++	0	+	0	+	++	0	0
MEL5 (MEL7)	+	+	++	++	?	0?	0	++	++	++	0	+	0	+	++	0	0
MEL6 (MEL8)	+	++	++	++	?	-?	0	-	++	++	0	-	0	+	++	-	0
MEL7 (MEL3)	+	+++?	++	++	?	0?	0?	++	++	++	0	+	0	++	++	0	--?
MEL8 (MEL10)	+	++	++	++	?	0?	-?	++	++	++	0	++	0	++	++	0	0
MEL9 (MEL11)	+	++	++	++	?	-?	0	-	++	++	0	-	0	++	++	-	0
MEL10 (MEL5)*	+	++	++	+	-?	0?	0?	-?	++	++	0	-	0	+	++	-	0

Sites code following focussed changes (and in Pre Submission Draft Local Plan)	SA objectives																
	1. Housing	2. Education	3. Sustainable transport	4. Economy and employment	5. Landscape	6. Biodiversity and geodiversity	7. Cultural heritage	8. Efficient use of land and minerals	9. Access to services	10. Social and economic inclusion	11. Crime	12. Waste	13. Economic growth	14. Health	15. Greenhouse gases and air quality	16. Flood risk	17. Water quality
Asfordby																	
ASF1*	++	++	++	+	--?	0?	0?	--	++	++	0	-	0	+	++	-	0
ASF2	+	++	++	++	?	-?	0	-	++	++	0	-	0	++/- -?	++	-	0
Bottesford																	
BOT1 (BOT2)*	+	+++	++	++	--?	0?	0?	--	++	++	0	-	0	++/- -?	++	0	0
BOT2 (BOT3)	+	++?	+	-	0?	0?	0	--?	++	++/-	0	-	0	+	++	0	0
BOT3 (BOT4)*	++	++?	++	+	--?	-?	0?	-?	++	++	0	-	0	++/- -?	++	-	0
BOT4 (BOT5)*	+	++?	++	++	?	0?	0	--?	++	++	0	-	0	++	++	-	0
Croxton Kerrial																	
CROX1*	+	+++	++	+	--?	0?	0?	--?	++	++	0	-	0	++/- -?	++	-	0
CROX2	+	+++	++	+	-?	-	0?	--?	++	++	0	-	0	++	++	-	0
CROX3*	+	+++	+	-	--?	0?	0?	-	++	++/-	0	-	0	++	++	-	0

Sites code following focussed changes (and in Pre Submission Draft Local Plan)	SA objectives																
	1. Housing	2. Education	3. Sustainable transport	4. Economy and employment	5. Landscape	6. Biodiversity and geodiversity	7. Cultural heritage	8. Efficient use of land and minerals	9. Access to services	10. Social and economic inclusion	11. Crime	12. Waste	13. Economic growth	14. Health	15. Greenhouse gases and air quality	16. Flood risk	17. Water quality
Harby																	
HAR1	+	++	+	+	--?	0?	0	--?	++	++	0	-	0	0/--?	++	-	0
HAR2	+	++	?	--?	?	0?	?	++	++	++/- -?	0	+	0	0	++	0	0
HAR3	+	++	+	+	-?	-?	0	+	++	++	0	+	0	0	++	0	0
HAR4 (HAR4 & HAR5)	+	++	+	+	-?	0/--?	0	--?	++	++	0	-	0	0	++	-	0
Hose																	
HOS1	+	+++?	+	+	-?	-?	0	--?	++	++	0	-	0	0	++	-	0
HOS2	+	+++?	+	+	-?	--?	0?	--?	++	++	0	-	0	0/--?	++	-	0
Long Clawson																	
LONG1*	+	+	+	+	--?	0?	0	-?	++	+	0	-	0	+	++	-	0
LONG2	+	++	+	+	-?	--?	0	-	++	+	0	-	0	+	++	-	0
LONG3*	+	+	+	-	--?	-?	0	+	++	++/-	0	+	0	++	++	0	0

Sites code following focussed changes (and in Pre Submission Draft Local Plan)	SA objectives																
	1. Housing	2. Education	3. Sustainable transport	4. Economy and employment	5. Landscape	6. Biodiversity and geodiversity	7. Cultural heritage	8. Efficient use of land and minerals	9. Access to services	10. Social and economic inclusion	11. Crime	12. Waste	13. Economic growth	14. Health	15. Greenhouse gases and air quality	16. Flood risk	17. Water quality
LONG4	+	++?	+	+	-?	0?	0?	--?	++	++	0	-	0	++	++	0	0
Old Dalby																	
OLD1*	+	++	+	-	--?	0?	0	-	++	++/-	0	-	0	0	++	-	0
Scalford																	
SCAL1	+	+++?	0	-	-?	--?	0?	-	++	++/-	0	-	0	0	++	-	0
Somerby																	
SOM1	+	++?	+	-	-?	-?	0	--?	++	++/-	0	-	0	++	++	0	0
SOM2	+	++	+	-	-?	-?	0?	--	++	++/-	0	-	0	++	++	-	0
Stathern																	
STAT1	+	++	+	-	-?	--?	-?	-	++	++/-	0	-	0	0	++	0	0
STAT2	+	++	+	-	0?	0?	0?	-	++	++/-	0	-	0	0	++	-	0
Waltham on the Wolds																	

Sites code following focussed changes (and in Pre Submission Draft Local Plan)	SA objectives																
	1. Housing	2. Education	3. Sustainable transport	4. Economy and employment	5. Landscape	6. Biodiversity and geodiversity	7. Cultural heritage	8. Efficient use of land and minerals	9. Access to services	10. Social and economic inclusion	11. Crime	12. Waste	13. Economic growth	14. Health	15. Greenhouse gases and air quality	16. Flood risk	17. Water quality
WAL1	+	++	++	+	?	0?	0?	--?	++	++	0	-	0	0	++	-	0
WAL2	++	++	+	+	--?	0?	0	-	++	++	0	-	0	0	++	0	0
Wymondham																	
WYM1	+	++	+	-	--?	--?	-?	-?	++	++/-	0	-	0	0	++	-	0
WYM2	+	++	+	-	--?	0?	0	-?	++	++/-	0	-	0	0	++	-	0
WYM3	+	++	+	-	--?	0?	0?	--?	++	++/-	0	-	0	0	++	0	0
Ab Kettleby																	
ABK1	+	++	+	-	?	0?	0	-	+	++/-	0	-	0	0	+	-	0
Asfordby Hill																	
ASFH1*	+	++?	++	++	-?	0?	0	--?	+	++	0	-	0	0	+	-	0
ASFH2	+	++?	+	+	-?	0?	0	--?	+	++	0	-	0	0	+	-	0
Easthorpe																	

Sites code following focussed changes (and in Pre Submission Draft Local Plan)	SA objectives																
	1. Housing	2. Education	3. Sustainable transport	4. Economy and employment	5. Landscape	6. Biodiversity and geodiversity	7. Cultural heritage	8. Efficient use of land and minerals	9. Access to services	10. Social and economic inclusion	11. Crime	12. Waste	13. Economic growth	14. Health	15. Greenhouse gases and air quality	16. Flood risk	17. Water quality
EAST1	+	+	0	-	--?	0?	0?	-/+?	+	+/-	0	+?	0	0	+	-	0
EAST2	+	+	0	-	-?	0?	0?	--	+	+/-	0	-	0	+	+	0	0
Frisby on the Wreake																	
FRIS1*	+	+?	+	-	-?	0?	0	--?	+	++/-	0	-	0	0	+	-	0
FRIS2*	+	+?	+	-	--?	0?	0	-	+	++/-	0	-	0	0	+	-	0
FRIS3*	+	++	+	-	-?	0?	0	--?	+	++/-	0	-	0	0	+	-	0
Gaddesby																	
GADD1	+	++	+	-	-?	--?	-?	--	+	++/-	0	-	0	0	+	-	0
GADD2 (GADD3)	+	+	+	-	--?	0?	0	--	+	+/-	0	-	0	0	+	-	0
GADD3	+	++	+	-	--?	--?	0?	--	+	++/-	0	-	0	0	+	-	0
Great Dalby																	
GREA1	+	++	+	-	--?	--?	0?	--?	+	++/-	0	-	0	0/--?	+	-	0

Sites code following focussed changes (and in Pre Submission Draft Local Plan)	SA objectives																
	1. Housing	2. Education	3. Sustainable transport	4. Economy and employment	5. Landscape	6. Biodiversity and geodiversity	7. Cultural heritage	8. Efficient use of land and minerals	9. Access to services	10. Social and economic inclusion	11. Crime	12. Waste	13. Economic growth	14. Health	15. Greenhouse gases and air quality	16. Flood risk	17. Water quality
Thorpe Arnold																	
THOR1*	+	+	++	+	0?	0?	0	--?	+	+/-	0	-	0	0	+	-	0
THOR2	+	++	++	+	-?	-?	0	--?	+	++	0	-	0	0	+	-	0
Reserve Sites																	
MEL11 (MEL13 Reserve)	++	++	++	++	?	0?	0	++	++	++	0	+	0	++/- -?	++	0	0
HAR5	+	+++?	+	-	-?	--?	0	--?	++	++/-	0	-	0	0	++	-	0
LONG5	+	+	+	-	?	0?	0	+	++	++/-	0	+	0	++/- -?	++	0	0
OLD2 (OLD3 Reserve)*	+	++	+	+	--?	-?	0?	-	++	++	0	-	0	0	++	-	0
SOM3	+	+	+	-	-?	0?	0?	--	++	++/-	0	-	0	+	++	-	0
STAT3	+	+++?	+	-	-?	--?	0?	-	++	++/-	0	-	0	0/--?	++	-	0
WAL3	++	++	++	+	-?	0?	0	--	++	++	0	-	0	0/--?	++	-	0

Reasons for changes, inclusion or discounting of sites in focussed changes

- 5.13 A full summary of the Council's reasons for changes to sites, or for including or discounting of sites in the focussed changes have been provided in Chapter 6 of the full SA Addendum.
- 5.14 Fourteen sites have been updated by the Council in the focussed changes to reflect the boundaries of planning permissions. Two further sites (CROX2 and GADD1) were subject to drafting inconsistencies in the Pre-submission Draft Local Plan, which have been corrected in the focussed changes.
- 5.15 A total of 23 sites are recommended by the Council to be updated in terms of the potential capacity due to an updated calculation or where planning permission has been granted on a site for a specific number of dwellings.
- 5.16 Two sites have been removed for consideration as allocations (MEL9 and ASF3) through the proposed focussed changes due to issues relating to availability.
- 5.17 Two of the original sites identified in the Pre-submission Draft Local Plan, (MEL6 and MEL12) have been granted planning permission since the consultation on the Pre-submission Draft Local Plan. As both planning permissions are for less than 10 dwellings they will now be dealt with as commitments rather than as allocations and have therefore been removed from the allocations list in the focussed changes.
- 5.18 Previous site BOT1 at land adjoining Belvoir Road, Bottesford has been removed in the focussed changes because the site has been completed and has no residual capacity remaining to be built out.
- 5.19 Site GADD2 has also been removed from the allocations list given that it is less suitable for development in terms of impacts on landscape character and significant heritage assets. Site LONG2 has also been removed for allocation due to potential impacts of development on the historic environment.
- 5.20 The Council proposes that the 'residual requirement' that was set out in the Pre-Submission Draft Local Plan is updated to take into account the latest monitoring of housing completions, dwellings under construction and dwellings with permission on small sites which was carried out during the first week of April 2017. As a result a number of sites have been removed as they are no longer needed to meet housing requirement.
- 5.21 At site OLD2 planning permission for 15 dwellings has been granted and therefore it will be identified as a commitment in the focussed changes rather than an allocation as the potential capacity of OLD1 is sufficient for the overall requirement needed in Old Dalby. This means that OLD3 is now identified in the focussed changes as OLD2 but is maintained as a reserve site..
- 5.22 Site HOS1 includes an extension to an existing site with planning permission (HOS1) which was submitted through the SHLAA 2017 along with a further adjacent additional site. These two sites were identified as performing better in the site assessments in terms of suitability and deliverability. As the housing requirement for HOS was met by the extended site HOS1 and the new site HOS2, the previous HOS2 and HOS3 sites have been removed by the Council in the focussed changes as they are no longer required as allocations to meeting the residual housing requirement.
- 5.23 In the focussed changes, the Council proposes to remove previous HAR3, land north of Stathern Lane, Harby due to a lack of access at present and lack of landowner commitment for its delivery. As such it was decided not to retain the previous site HAR3 as an allocation or a reserve site in the focussed changes.
- 5.24 Since the consultation on the Pre-submission Draft Local Plan sites have been submitted to the Council through the Strategic Housing Land Availability Assessment (SHLAA) 2017 process with those with capacity for 10 or more dwellings and considered suitable for development subject to full site assessments. These 18 additional sites have been subject to SA as part of this SA Addendum and the Council has also assessed them against the existing sites. Where necessary

the ranking of sites in each settlement has been updated by the Council along with the numbering of the sites to reflect the revised site assessment results.

- 5.25 Of the 18 sites assessed, nine sites (GADD3, GREA1, HAR5 Reserve, extension to HOS1, HOS2, MEL4, SCAL1, extension to STAT1 and STAT3 Reserve) were identified by the Council as being potentially suitable and have been included in the revised list of allocated sites in the focussed changes.
- 5.26 Following the updated site assessment work, one site that was previously assessed in Long Clawson (MBC/144/13) was ranked more highly by the Council than sites LONG3 and LONG4. As a result this site is now included in the focussed changes as LONG2 (replacing the previous LONG2 site situated on Back Lane Long Clawson) with a potential capacity of 35 dwellings.
- 5.27 Previous site HAR6 in Harby, which was identified by the Council as a reserve site initially has been granted planning permission on appeal since the consultation on the Draft Plan in November 2016. This site has therefore been included in the focussed changes as a new site in the list of allocations under policy C1(a) and removed from the reserve sites listed under policy C1(b).

Overall Spatial Strategy

- 5.28 It should be noted that the changes arising as a result of the focussed changes do not fundamentally alter the overall proportion of development to be provided at Melton Mowbray (approximately two-thirds) and in the rural areas (approximately one third) is in accordance with the Spatial strategy presented in the Pre-Submission Draft Local Plan and therefore the overall conclusions in Chapter 9 of the SA Report (October 2016) of the Pre-Submission Local Plan remain largely the same.

6 Next steps

- 6.1 The full SA Addendum and this Non-Technical Summary will be made available for public consultation alongside the proposed focussed changes to the Pre-Submission Local Plan.
- 6.2 Following the consultation, the Council will then decide if any further work on the Local Plan is required in order to proceed to examination.

LUC
June 2017