

Melton Local Plan : Schedule of Policies Map changes, May 2018

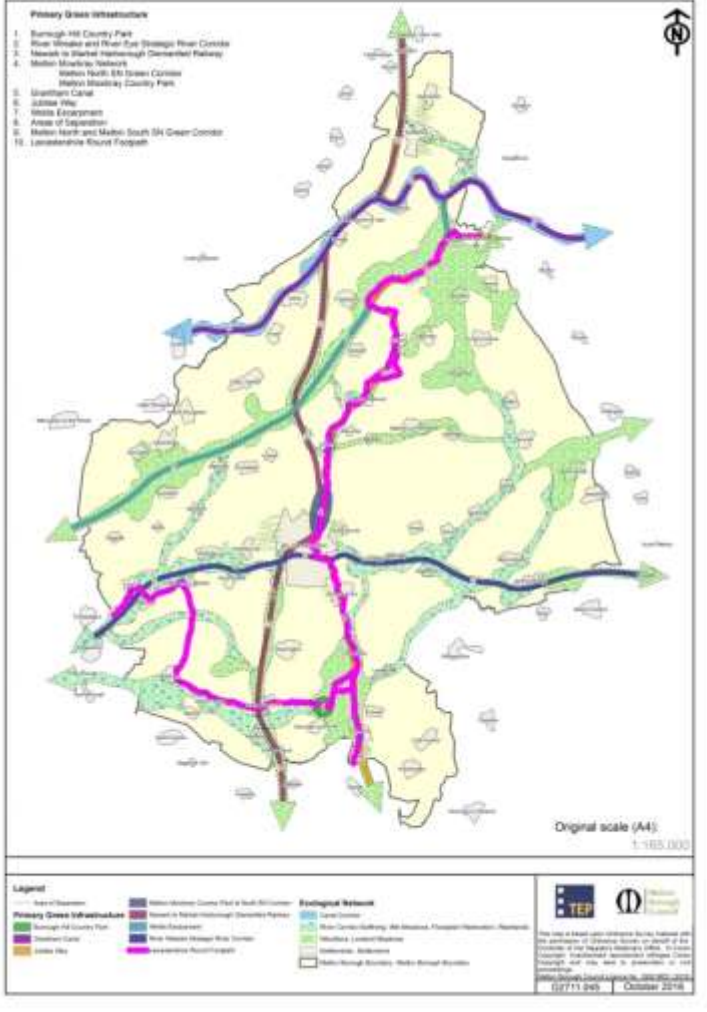
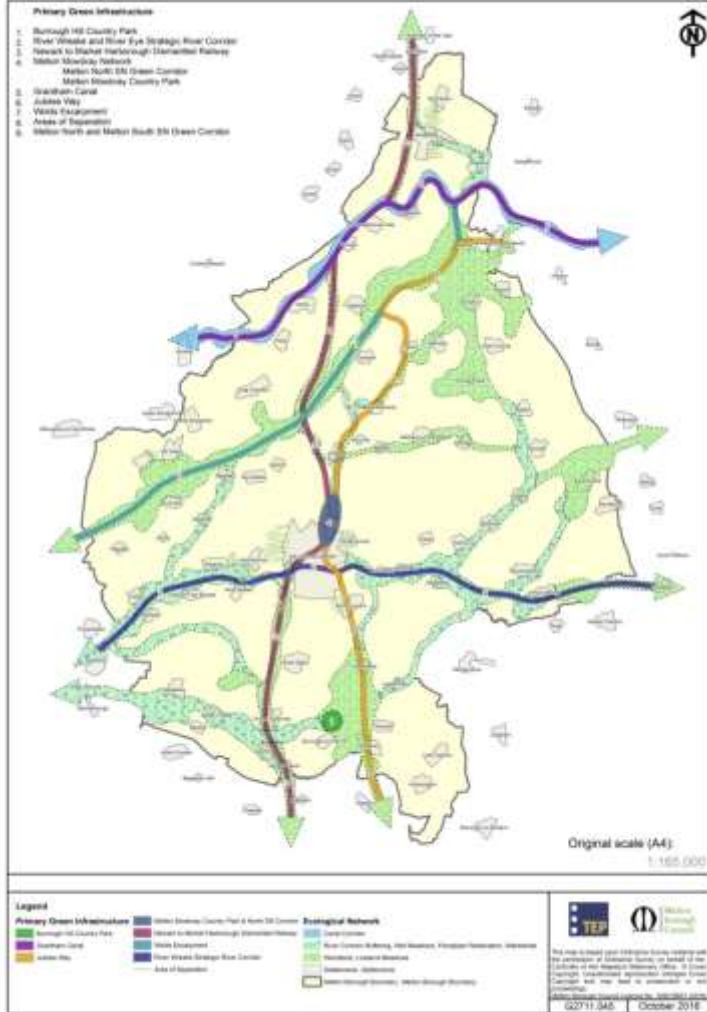
Each proposed modification has three rows on the table. In the first row there is a reference number for the change, a description of the modification and the reason for the change. The second row includes how the map looks (left) and how it will be after the modification is made (right). Finally, the third row includes any necessary additional explanation about the maps (if needed).

Table of contents:

Change	Related to	Page
PMC1. New feature: Leicestershire Round Footpath. Green Infrastructure Map	Schedule of MAIN MODIFICATIONS	2
PMC2. New feature: Enhancement Area, SOM2	Schedule of MAIN MODIFICATIONS	3
PMC3. New Allocation, ASF3	Schedule of MAIN MODIFICATIONS	4
PMC4. Deallocation, former LONG4	Schedule of MAIN MODIFICATIONS	5
PMC5. Renaming, former LONG5 to LONG4	Schedule of MAIN MODIFICATIONS	6
PMC6. Relabelling, Queensway/Old Dalby, Green Infrastructure	Schedule of additional modifications	7
PMC7. Redrawing, Normanton Area, Agricultural Land Classification	Schedule of additional modifications	8
PMC8. New Inset Map, Great Dalby	Schedule of additional modifications	9
PMC9. New Inset Map, Scalford	Schedule of additional modifications	10
PMC10. Boundary amendment, HAR3	Schedule of additional modifications	11
PMC11. Boundary amendment, THOR1	Schedule of additional modifications	12
PMC12. Boundary amendment, STAT1	Schedule of additional modifications	13
PMC13. Boundary amendment, BOT4	Schedule of additional modifications	14

**Melton Borough Council
Melton Local Plan - Schedule of Policies Map Changes, April 2018**

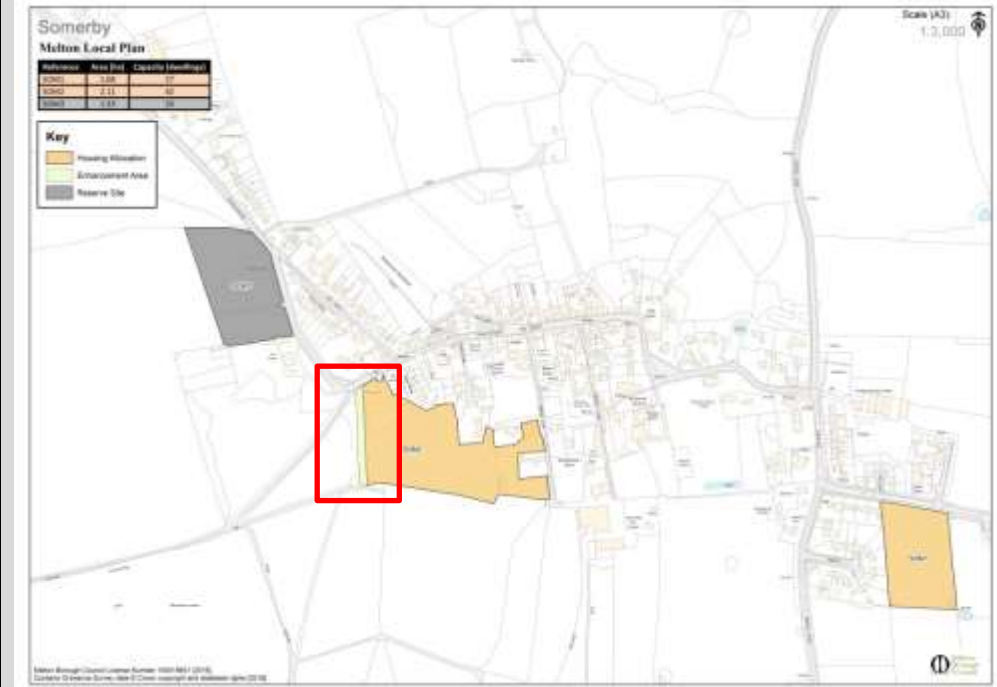
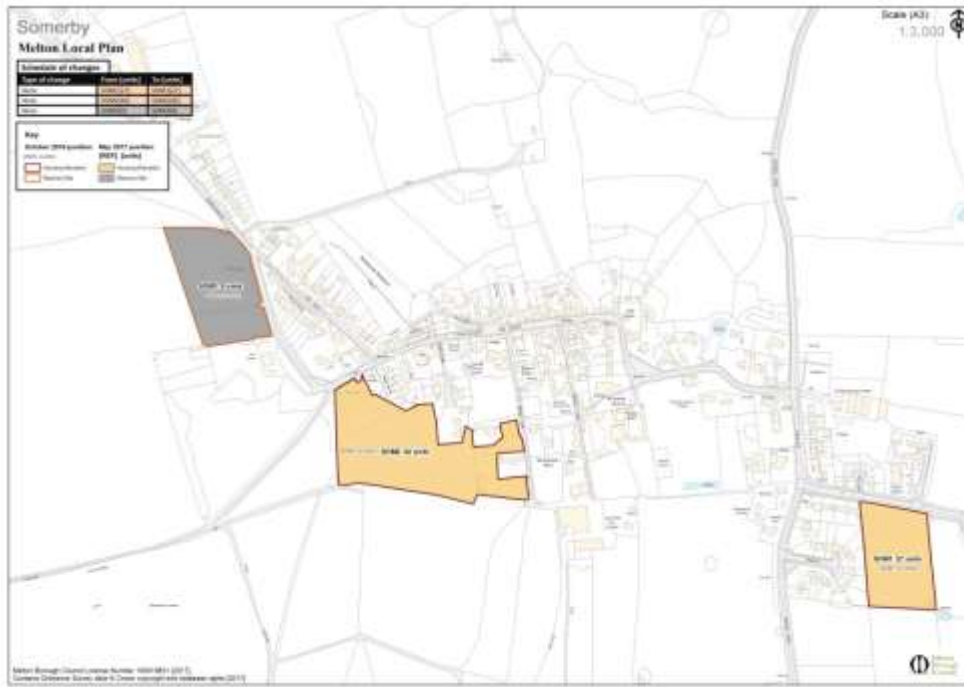
No.	Modification Suggested	Why Modification is Suggested
PMC1	Borough Wide Maps - Primary Green Infrastructure Map. Add the Leicestershire Round Footpath to the map, to reflect Main Modification MM4	Appendix 1 - To reflect changes on Main Modifications Schedule



Notes | The Leicestershire Round Footpath is shown in magenta in the second map

**Melton Borough Council
Melton Local Plan - Schedule of Policies Map Changes, April 2018**

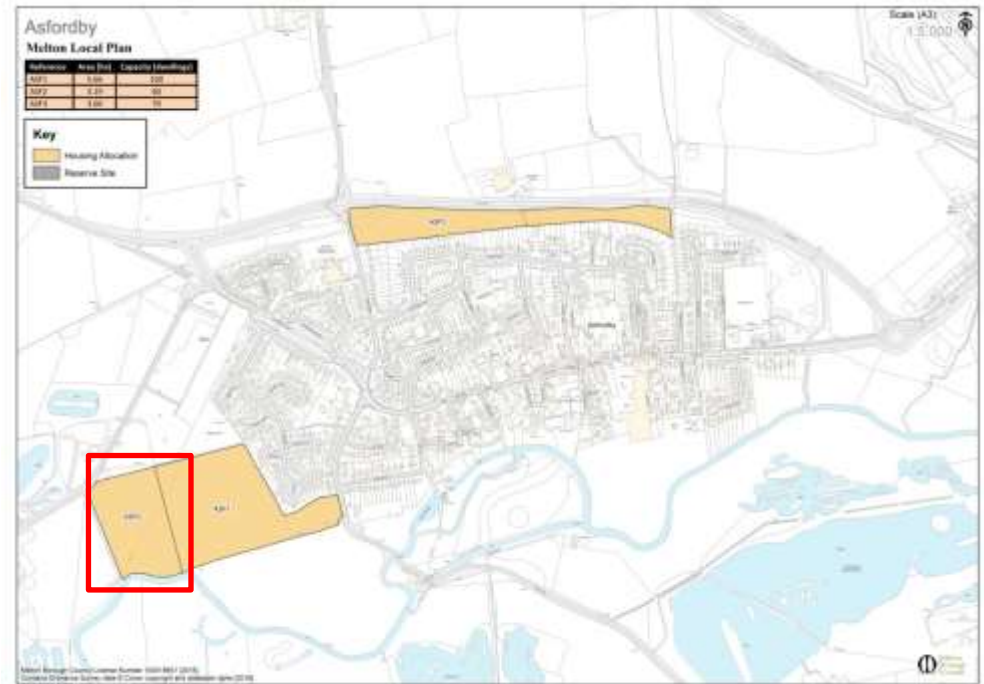
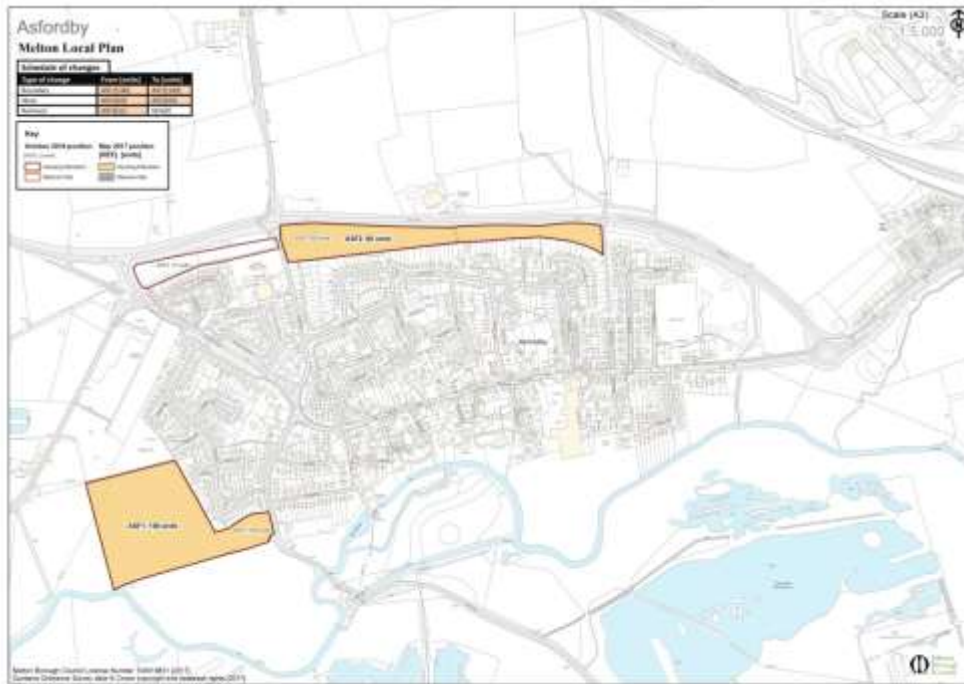
No.	Modification Suggested	Why Modification is Suggested
PMC2	Inset Map – Somerby Modify it to reflect proposed Main Modification MM4 – SOM2 that includes an enhancement area	Changes on Appendix 1 - To reflect changes on Main Modifications Schedule



Notes The maps above are the Appendix 1 maps (Focused Changes stage at the left and new one at the right) and not the Inset maps this modification is related to. The inset maps include all the spatial policies, including constraints related to these policies alongside the allocations and reserve sites of a settlement. Therefore these maps are just a representation of the change rather than the modification itself in order to make easier to understand the modification. The area subject to modifications has been highlighted with a red outline.

**Melton Borough Council
Melton Local Plan - Schedule of Policies Map Changes, April 2018**

No.	Modification Suggested	Why Modification is Suggested
PMC3	Inset Map – Asfordby Modify it to reflect proposed Main Modification MM4 – allocation of ASF3	Changes on Appendix 1 - To reflect changes on Main Modifications Schedule



Notes The maps above are the Appendix 1 maps (Focused Changes stage on the left and the proposed modified one at the right) and not the Inset maps this modification is related to. The inset maps include all the spatial policies including constraints related to these policies alongside the allocations and reserve sites of a settlement. Therefore these maps are just a representation of the change rather than the modification itself in order to make easier to understand the modification. The area subject to modifications has been highlighted with a red outline.

**Melton Borough Council
Melton Local Plan - Schedule of Policies Map Changes, April 2018**

No.	Modification Suggested	Why Modification is Suggested
PMC4	Inset Map – Long Clawson Modify it to reflect proposed Main Modification MM4 – Deallocation of LONG4	Changes on Appendix 1 - To reflect changes on Main Modifications Schedule



Notes The maps above are the Appendix 1 maps (Focused Changes stage at the left and new one at the right) and not the Inset maps this modification is related to. The inset maps include all the spatial policies, including constraints related to these policies alongside the allocations and reserve sites of a settlement. Therefore these maps are just a representation of the change rather than the modification itself in order to make easier to understand the modification. The area subject to modifications has been highlighted with a red outline.

**Melton Borough Council
Melton Local Plan - Schedule of Policies Map Changes, April 2018**

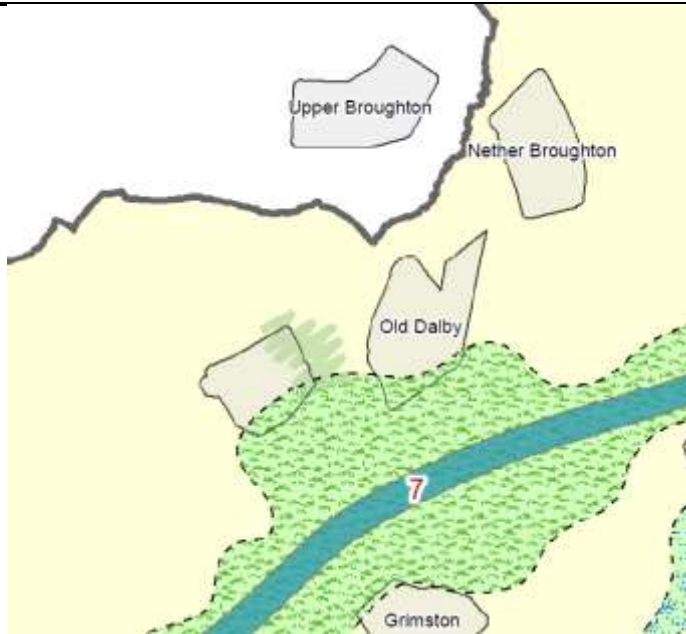
No.	Modification Suggested	Why Modification is Suggested
PM5	Inset Map – Long Clawson Modify it to reflect proposed Main Modification MM4 – Renumbering of LONG5 (reserve) to LONG4 (reserve)	Changes on Appendix 1 - To reflect changes on Main Modifications Schedule



Notes The maps above are the Appendix 1 maps (Focused Changes stage on the left and proposed modified one on the right) and not the Inset maps this modification is related to. The inset maps include all the spatial policies including constraints related to these policies alongside the allocations and reserve sites of a settlement. Therefore these maps are just a representation of the change rather than the modification itself in order to make easier to understand the modification. The area subject to modifications has been highlighted with a red outline.

Melton Borough Council
Melton Local Plan - Schedule of Policies Map Changes, April 2018

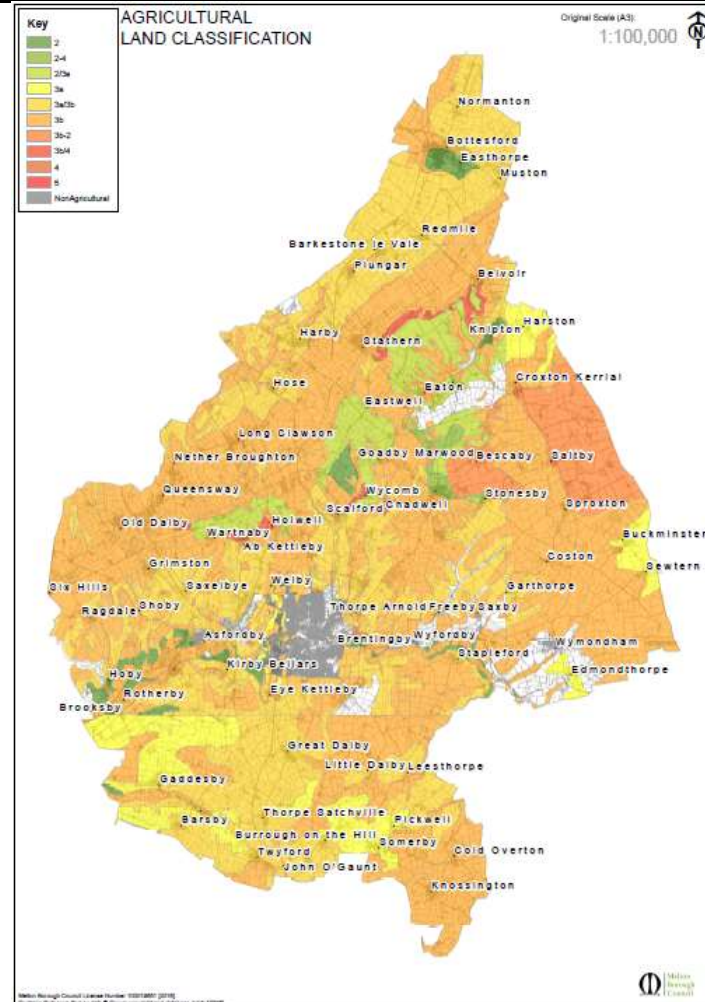
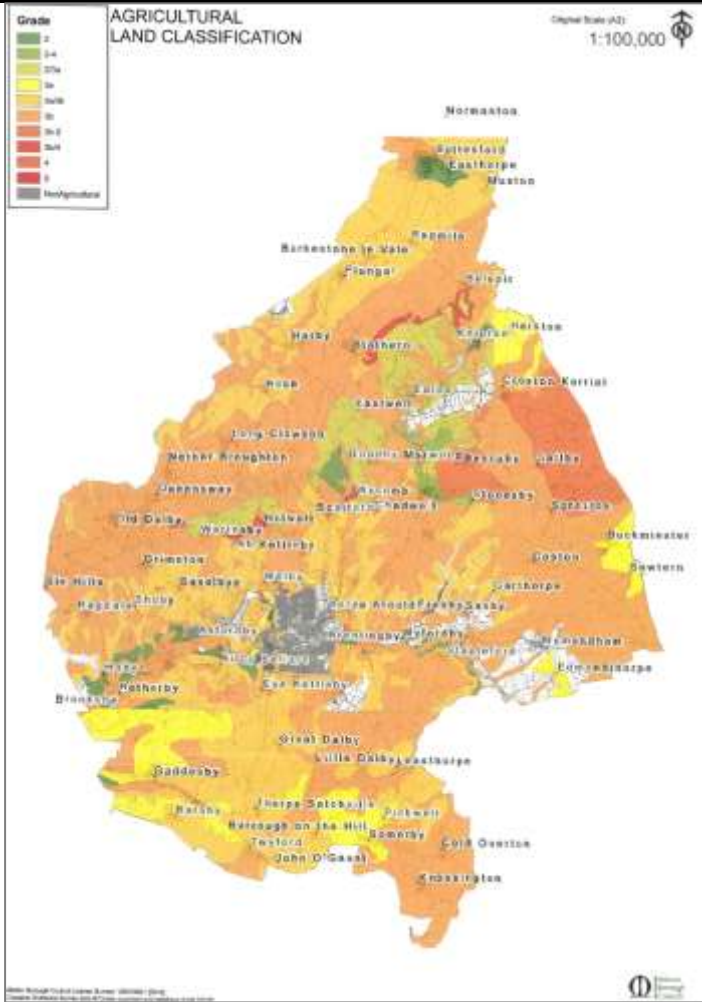
No.	Modification Suggested	Why Modification is Suggested
PMC6	Borough Wide Maps - Primary Green Infrastructure Map. Move 'Old Dalby' label and create 'Queensway' label in its place	Incorrectly labelled



Notes The shape is related to built up areas and in this case, Queensway includes the Crown Business Park and the Old Dalby Trading Estate

**Melton Borough Council
Melton Local Plan - Schedule of Policies Map Changes, April 2018**

No.	Modification Suggested	Why Modification is Suggested
PMC7	Borough Wide Maps – Agricultural Land Classification. Remake the map as information is not displayed in the area of Normanton	Part of the layer is not displayed

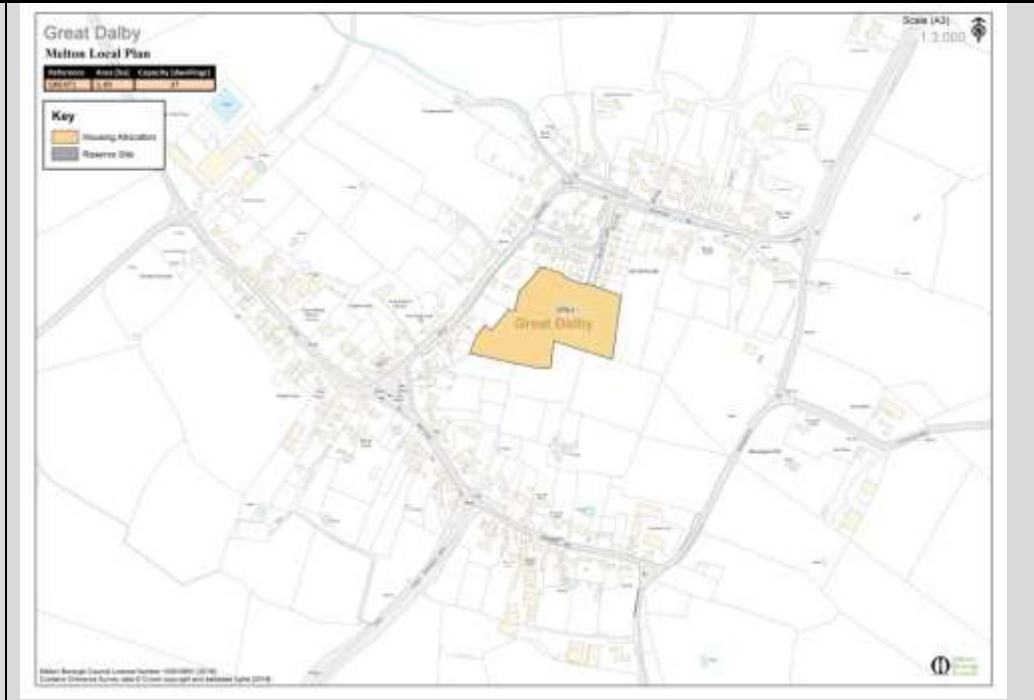


Notes | None

**Melton Borough Council
Melton Local Plan - Schedule of Policies Map Changes, April 2018**

No.	Modification Suggested	Why Modification is Suggested
PMC8	Inset Maps and Policies Map Add inset map for Great Dalby (A3 size) adequate notation in the Policies Map (A0 size)	Settlements with allocations and/or Local Green Spaces have inset maps. With the allocation of GREAT1 this is needed for Great Dalby

N/A

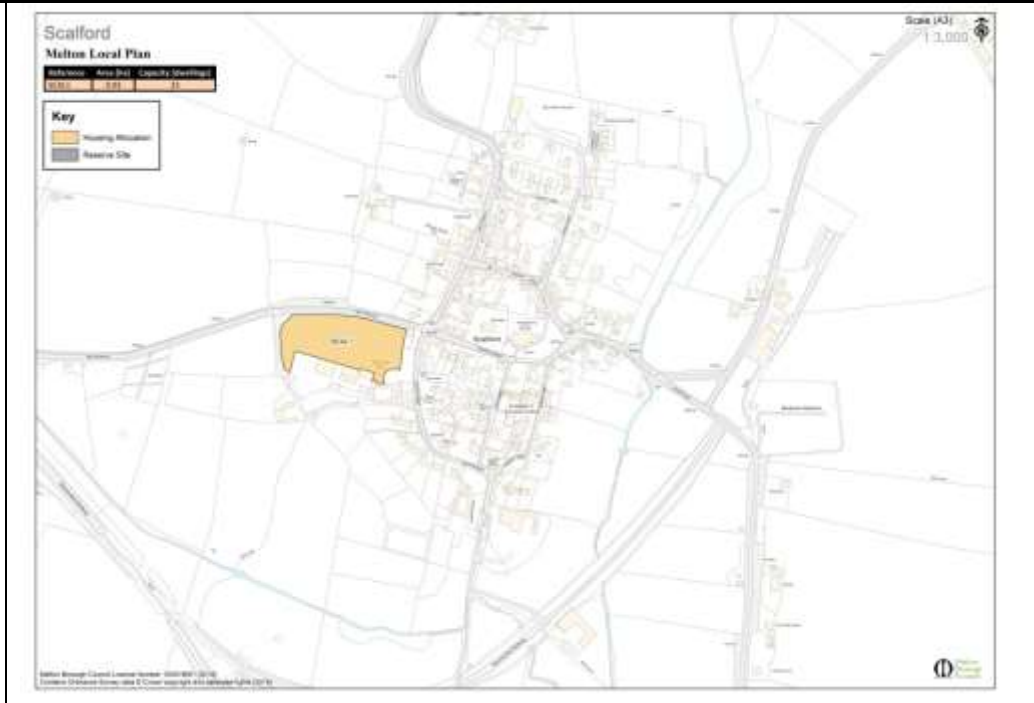


Notes The map shown above is for the Appendix 1 and not the Inset map this modification is related to. The inset map includes all the spatial policies, including constraints related to these policies, alongside the allocations and reserve sites of a settlement. Therefore this map is just a representation of the change rather than the modification itself.

**Melton Borough Council
Melton Local Plan - Schedule of Policies Map Changes, April 2018**

No.	Modification Suggested	Why Modification is Suggested
PMC9	Inset Maps and Policies Map Add inset map for Scalford (A3 size) adequate notation in the Policies Map (A0 size)	Settlements with allocations and/or Local Green Spaces have inset maps. With the allocation of SCAL1 this is needed for Scalford

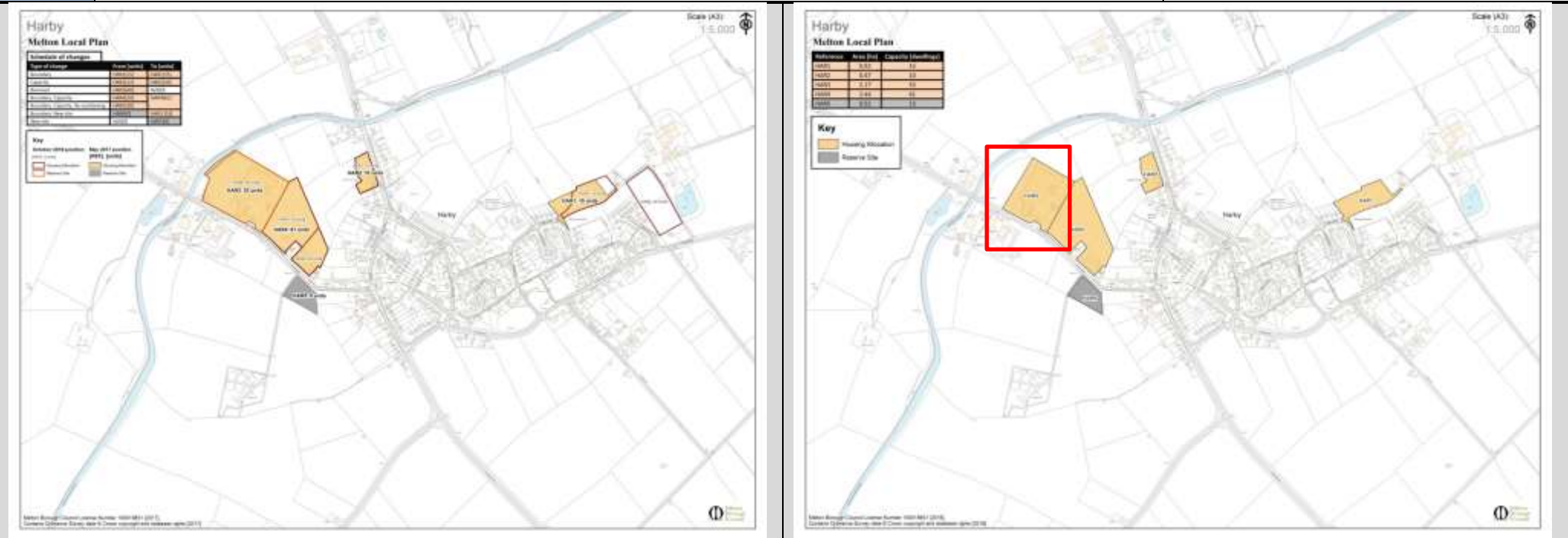
N/A



Notes The map shown above is for the Appendix 1 and not the Inset map this modification is related to. The inset map includes all the spatial policies, including constraints related to these policies, alongside the allocations and reserve sites of a settlement. Therefore this map is just a representation of the change rather than the modification itself.

Melton Borough Council
Melton Local Plan - Schedule of Policies Map Changes, April 2018

No.	Modification Suggested	Why Modification is Suggested
PMC10	Inset Map – Harby Modify it as per changes on Appendix 1 – Amendment of boundary as per planning permission granted (HAR3)	Changes on Appendix 1 - To reflect changes on Main Modifications Schedule



Notes The maps above are the Appendix 1 maps (Focused Changes stage on the left and the proposed modified one on the right) and not the Inset maps this modification is related to. The inset maps include all the spatial policies including constraints related to these policies alongside the allocations and reserve sites of a settlement. Therefore these maps are just a representation of the change rather than the modification itself in order to make easier to understand the modification. The area subject to modifications has been highlighted with a red outline.

Melton Borough Council
Melton Local Plan - Schedule of Policies Map Changes, April 2018

No.	Modification Suggested	Why Modification is Suggested
PMC11	Inset Map – Thorpe Arnold Modify it as per changes on Appendix 1 – Amendment of boundary as per updated landowner information (THOR1)	Changes on Appendix 1 - To reflect changes on Main Modifications Schedule



Notes The maps above are the Appendix 1 maps (Focused Changes stage on the left and the proposed modified one at the right) and not the Inset maps this modification is related to. The inset maps include all the spatial policies including constraints related to these policies alongside the allocations and reserve sites of a settlement. Therefore these maps are just a representation of the change rather than the modification itself in order to make easier to understand the modification. The area subject to modifications has been highlighted with a red outline.

**Melton Borough Council
Melton Local Plan - Schedule of Policies Map Changes, April 2018**

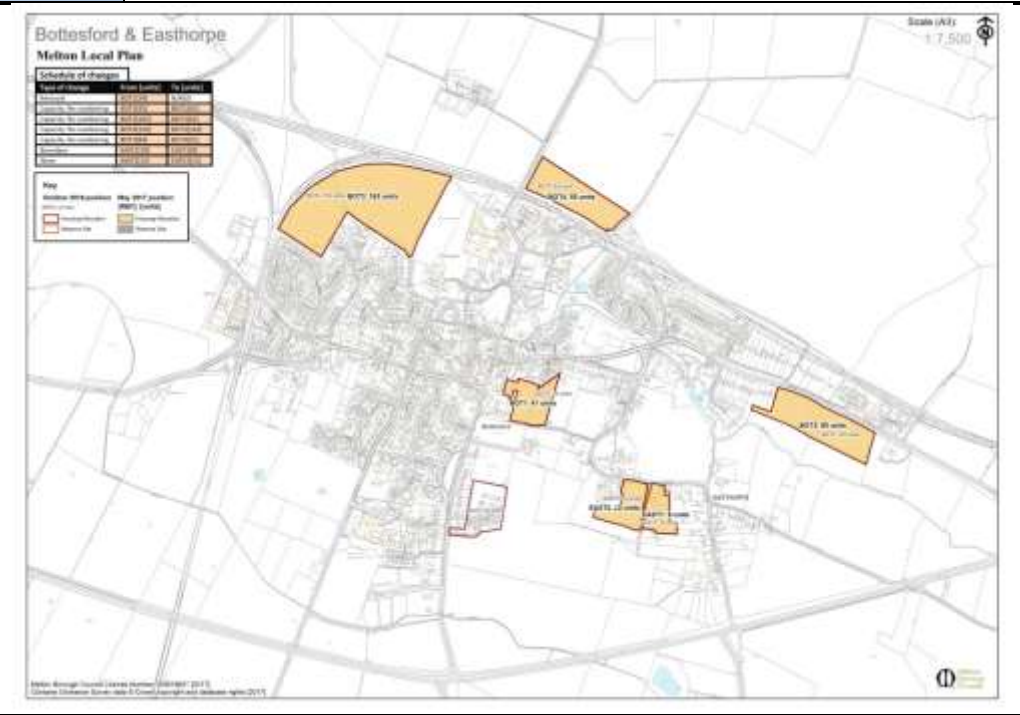
No.	Modification Suggested	Why Modification is Suggested
PMC12	Inset Map – Stathern Modify it as per changes on Appendix 1 – Amendment of boundary to reflect access agreement secured by site promoter (STAT1)	Changes on Appendix 1 - To reflect changes on Main Modifications Schedule



Notes The maps above are the Appendix 1 maps (Focused Changes stage on the left and the proposed modified one on the right) and not the Inset maps this modification is related to. The inset maps include all the spatial policies including constraints related to these policies alongside the allocations and reserve sites of a settlement. Therefore these maps are just a representation of the change rather than the modification itself in order to make easier to understand the modification. The area subject to modifications has been highlighted with a red outline.

**Melton Borough Council
Melton Local Plan - Schedule of Policies Map Changes, April 2018**

No.	Modification Suggested	Why Modification is Suggested
PMC13	Inset Map – Bottesford Modify it as per changes on Appendix 1 – Amendment of boundary as per planning permission granted (BOT4)	Changes on Appendix 1 - To reflect changes on Main Modifications Schedule



Notes The maps above are the Appendix 1 maps (Focused Changes stage at the left and proposed modification one on the right) and not the Inset maps this modification is related to. The inset maps include all the spatial policies including constraints related to these policies alongside the allocations and reserve sites of a settlement. Therefore these maps are just a representation of the change rather than the modification itself in order to make easier to understand the modification. The area subject to modifications has been highlighted with a red outline.